

(19) World Intellectual Property Organization  
International Bureau



(43) International Publication Date  
8 March 2001 (08.03.2001)

PCT

(10) International Publication Number  
**WO 01/16340 A1**

(51) International Patent Classification<sup>7</sup>: **C12N 15/82**,  
A01H 5/10, 5/00, C12N 15/29

Cove, N.W., Calgary, Alberta T3A 5N5 (CA). **SINGH, Surinder** [AU/AU]; 10 Lucas Place, Downer, ACT 2601 (AU).

(21) International Application Number: PCT/CA00/00988

(74) Agent: **BERESKIN & PARR**; 40 King Street West, 40th Floor, Toronto, Ontario M5H 3Y2 (CA).

(22) International Filing Date: 25 August 2000 (25.08.2000)

(25) Filing Language: English

(81) Designated States (*national*): AE, AG, AL, AM, AT, AU, AZ, BA, BB, BG, BR, BY, BZ, CA, CH, CN, CR, CU, CZ, DE, DK, DM, DZ, EE, ES, FI, GB, GD, GE, GH, GM, HR, HU, ID, IL, IN, IS, JP, KE, KG, KP, KR, KZ, LC, LK, LR, LS, LT, LU, LV, MA, MD, MG, MK, MN, MW, MX, MZ, NO, NZ, PL, PT, RO, RU, SD, SE, SG, SI, SK, SL, TJ, TM, TR, TT, TZ, UA, UG, US, UZ, VN, YU, ZA, ZW.

(26) Publication Language: English

(30) Priority Data:  
60/151,044 27 August 1999 (27.08.1999) US  
60/161,722 27 October 1999 (27.10.1999) US  
2,310,304 30 May 2000 (30.05.2000) CA

(84) Designated States (*regional*): ARIPO patent (GH, GM, KE, LS, MW, MZ, SD, SL, SZ, TZ, UG, ZW), Eurasian patent (AM, AZ, BY, KG, KZ, MD, RU, TJ, TM), European patent (AT, BE, CH, CY, DE, DK, ES, FI, FR, GB, GR, IE, IT, LU, MC, NL, PT, SE), OAPI patent (BF, BJ, CF, CG, CI, CM, GA, GN, GW, ML, MR, NE, SN, TD, TG).

(71) Applicants (*for all designated States except US*): **SEMBIOSYS GENETICS INC.** [CA/CA]; 2500 University Avenue Drive N.W., Room 460, Calgary, Alberta T2N 1N4 (CA). **COMMONWEALTH SCIENTIFIC AND INDUSTRIAL RESEARCH ORGANISATION** [AU/AU]; CSIRO Plant Industry, GPO Box 1600, Canberra, ACT 2601 (AU).

**Published:**

- *With international search report.*
- *Before the expiration of the time limit for amending the claims and to be republished in the event of receipt of amendments.*

(72) Inventors; and

(75) Inventors/Applicants (*for US only*): **CHAUDHARY, Sarita** [CA/CA]; 193 Hawkbury Close N.W., Calgary, Alberta T3G 3C9 (CA). **VAN ROOIJEN, Gijs** [NL/CA]; 3223 Bearspaw Drive N.W., Calgary, Alberta T2L 1T1 (CA). **MOLONEY, Maurice, M.** [IE/CA]; 34 Edgebrook

*For two-letter codes and other abbreviations, refer to the "Guidance Notes on Codes and Abbreviations" appearing at the beginning of each regular issue of the PCT Gazette.*



**WO 01/16340 A1**

(54) Title: FLAX SEED SPECIFIC PROMOTERS

(57) Abstract: Novel methods for the expression of non-native genes in flax seeds and the seeds of other plant species are provided. The methods involve the use of seed-specific promoters obtained from flax. Additionally provided are novel flax seed-specific promoters, chimeric nucleic acid constructs comprising novel flax seed-specific promoters, transgenic plant cells, transgenic plants and transgenic plant seeds containing novel flax seed-specific promoters. The promoters and methods are useful, for example, for altering the seed oil and protein composition in flax seed or other plant seeds.

**Title:** Flax Seed Specific Promoters**FIELD OF THE INVENTION**

The present invention relates to plant genetic engineering methods useful for the alteration of the constituents of plant seeds. More specifically, the invention relates to promoters that have been obtained from flax and are capable of directing expression of non-native genes in flax seeds as well as the seeds of other plants.

**BACKGROUND OF THE INVENTION**

Flax or linseed (*Linum usitatissimum*) is a commercially important oilseed crop. Flax oil and meal are valuable raw materials derived from flax seed. A further economically significant raw material, flax fiber, is obtainable from the stem of the plant. The flax oil fraction is used for non-edible purposes, for example in the manufacture of varnish and paint, and has more recently become suited for use in the manufacture of a range of edible products, such as margarines and salad oils and dressings, by virtue of newly bred so called Linola cultivars (Green (1986) Can. J. Plant Sci, 66: 499-503). Flax meal is used primarily as a constituent of ruminant feeds while flax fibers are used in the manufacture of linen fabrics. Given its economic importance as a source for raw materials, it is desirable to further improve and diversify the available flax cultivar portfolio both with respect to agronomic performance, for example seed yield, resistance to pathogens and low climatic temperatures, and with respect to yield and quality of the raw materials to suit downstream applications. Although it is possible to obtain improved flax cultivars through conventional plant breeding, as evidenced by the development of the Linola cultivars, developing an elite agronomic plant line requires large investments in plant breeding due to the long timelines involved. Plant genetic engineering technology allows the isolation of genes directly from unrelated species and the transfer of these genes into elite agronomic backgrounds, thereby significantly reducing the time required to develop new cultivars. In addition plant genetic engineering permits the manufacture of products not naturally obtainable from flax, for example therapeutic agents.

In order to develop novel flax cultivars through plant genetic engineering, control over the expression of the introduced foreign or non-native gene is of critical importance. The desired expression characteristics for the non-native gene, such as the level of expression of the non-native gene, the particular plant tissue or organ in which the non-native gene is expressed, and the particular time in the growth cycle of the plant at which the non-native gene is expressed, will vary depending on the application for which the plant line is developed. For example, the modification of the seed oil composition may require low levels of seed-specific expression of an enzyme involved in fatty acid metabolism at an early stage in seed development (see for example US Patent 5,420,034). On the other hand expression of a pharmaceutical protein could preferably require high

levels of leaf-specific expression upon harvesting of the plant leaves (see for example, US Patent 5,929,304).

In order to manipulate the expression characteristics of non-native genes numerous factors can be influenced. One factor is the choice of the transcriptional promoter used. A wide range of plant compatible promoters is currently available and some of the better documented promoters include constitutive promoters such as the 35-S CaMV promoter (Rothstein *et al.* (1987), Gene 53: 153-161) and the ubiquitin promoter (US Patent 5,614,399), tissue specific promoters such as seed-specific promoters, for example the phaseolin promoter (Sengupta-Gopalan *et al.*, (1985), PNAS USA 82: 3320-3324) and inducible promoters, such as those inducible by heat (Czarnencka *et al.*, (1989), Mol. Cell. Biol. 9 (8): 3457-3464), UV light, elicitors and wounding (Lois *et al.*, (1989) EMBO J. 8 (6): 1641-1648), or chemicals such as endogenous hormones (Skriver *et al.* (1991), Proc. Natl. Acad. Sci. USA 88(16): 7266-7270). Other factors that can be manipulated in order to control the expression characteristics of non-native gene in plants include transcriptional modification factors such as introns, polyadenylation sites and transcription termination sites. The expression characteristics of the non-native gene can further be manipulated by factors that affect translation, such as ribosomal binding sites and the codon bias that is exhibited by the host. Furthermore, the non-native gene itself may affect the viability of the transgenic plant, thus limiting particularly the levels of expression that can be attained. In some cases it may be possible to overcome this problem, by expressing the protein in a tissue specific manner, e.g. in the leaves or seed, or by restricting the accumulation of the protein in different subcellular compartments such as for example the cytoplasm, the endoplasmic reticulum or vacuoles, typically by the presence or the absence of specific targeting sequences capable of directing the protein to these compartments. Another factor that will affect the expression characteristics is the location in which the construct inserts itself into the host chromosome. This effect could provide an explanation as to why different plants, transformed with the same recombinant construct, can have fluctuating levels of recombinant protein expression.

To the best of the inventors' knowledge, expression of non-native genes in flax seeds is only documented in PCT Patent Application WO 98/18948. This application discloses two stearyl-acyl carrier protein desaturase (SAD) genes derived from flax. The associated SAD promoter sequences are useful for the modification of flax and other plants for the expression of endogenous or foreign genes. However the methods taught by WO 98/18948 are limited by the fact that the SAD promoters are not seed-specific in flax and confer expression to leaves, stems, flowers and seeds. Expression of non-native genes thus may result in undesirable side effects in non-seed tissues. In addition the use of the SAD promoters allows limited control over expression level and timing of expression.

There is a need in the art to further improve methods for the expression of non-native genes in flax seeds and other plant seeds.

#### SUMMARY OF THE INVENTION

The present invention relates to improved methods for the seed-specific  
5 expression of non-native genes in plants. In particular, the invention relates to improved methods for the seed-specific expression of non-native genes in flax.

Accordingly, in one aspect, the invention provides a method for the expression of a nucleic acid sequence of interest in flax seeds comprising:

- (a) preparing a chimeric nucleic acid construct comprising in the 5' to 3'  
10 direction of transcription as operably linked components
- (1) a seed-specific promoter obtained from flax; and
  - (2) the nucleic acid sequence of interest wherein said nucleic acid of interest is non-native to said flax seed-specific promoter;
- (b) introducing said chimeric nucleic acid construct into a flax plant cell; and  
15 (c) growing said flax plant cell into a mature flax plant capable of setting seed, wherein said nucleic acid sequence of interest is expressed in the seed under the control of said flax seed-specific promoter.

In a preferred embodiment of the invention, at least one expression characteristic, e.g. timing of expression in the plant's life cycle, conferred by the promoter to the  
20 non-native nucleic acid sequence is similar to that expression characteristic when conferred to a native nucleic acid sequence. In further preferred embodiments, the flax seed-specific promoter is an oleosin promoter, a 2S storage protein promoter or a legumin-like seed storage protein promoter.

In a further aspect, the present invention provides transgenic flax seeds prepared  
25 according to a method comprising:

- (a) preparing a chimeric nucleic acid construct comprising in the 5' to 3'  
direction of transcription as operably linked components:
- (1) a seed-specific promoter obtained from flax; and
  - (2) a nucleic acid sequence of interest wherein said nucleic acid of interest is  
30 non-native to said seed-specific promoter;
- (b) introducing said chimeric nucleic acid construct into a flax plant cell; and  
(c) growing said flax plant cell into a mature flax plant capable of setting seed, wherein said nucleic acid sequence of interest is expressed in the seed under the control of said seed-specific promoter.

In a further aspect the present invention provides flax plants capable of setting  
35 seed prepared by a method comprising:

- (a) preparing a chimeric nucleic acid construct comprising in the 5' to 3'  
direction of transcription as operably linked components:

- (1) a seed-specific promoter obtained from flax; and
- (2) a nucleic acid sequence of interest wherein said nucleic acid of interest is non-native to said seed-specific promoter;
- (b) introducing said chimeric nucleic acid construct into a flax plant cell; and
- 5 (c) growing said flax plant cell into a mature flax plant capable of setting seed, wherein said nucleic acid sequence of interest is expressed in the seed under the control of said seed-specific promoter.

In yet a further aspect, the present invention provides novel flax seed specific promoters useful for the expression of non-native genes in flax seeds and the seeds of other  
10 plant species, useful for example for modification of the protein or oil composition of the seed.

In a preferred embodiment, the seed specific promoter comprises:

- (a) a nucleic acid sequence as shown in Figure 1 (SEQ.ID.NO.:1), Figure 2 (SEQ.ID.NO.:4), Figure 3 (SEQ.ID.NO.:6) or Figure 4 (SEQ.ID.NO.:8) wherein T can also be  
15 U;
- (b) a nucleic acid sequence that is complimentary to a nucleic acid sequence of (a);
- (c) a nucleic acid sequence that has substantial sequence homology to a nucleic acid sequence of (a) or (b);
- 20 (d) a nucleic acid sequence that is an analog of a nucleic acid sequence of (a), (b) or (c); or
- (e) a nucleic acid sequence that hybridizes to a nucleic acid sequence of (a), (b), (c) or (d) under stringent hybridization conditions.

In another aspect, the invention provides chimeric nucleic acid sequences  
25 comprising a first nucleic acid sequence obtained from flax operatively linked to a second nucleic acid sequence non-native to said first nucleic acid sequence wherein said first nucleic acid sequence comprises a novel flax seed-specific promoter.

Other features and advantages of the present invention will become readily apparent from the following detailed description. It should be understood, however, that  
30 the detailed description and the specific examples while indicating preferred embodiments of the invention are given by way of illustration only, since various changes and modifications within the spirit and scope of the invention will become apparent to those skilled in the art of this detailed description.

#### **BRIEF DESCRIPTION OF THE DRAWINGS**

35 The invention will now be described in relation to the drawings in which:

Figure 1 shows the DNA sequence (SEQ.ID.NO.:1) of a flax genomic clone encoding a 16.0 kDa oleosin protein (SEQ.ID.NOS.:2 and 3).

Figure 2 shows the DNA sequence (SEQ.ID.NO.:4) of a flax genomic clone encoding a 18.6 kDa oleosin protein (SEQ.ID.NO.:5).

Figure 3 shows the DNA sequence (SEQ.ID.NO.:6) of a flax genomic clone encoding a 2S storage protein (SEQ.ID.NO.:7).

5 Figure 4 shows the DNA sequence (SEQ.ID.NO.:8) of a flax genomic clone encoding a 54.5 kDa legumin-like storage protein (SEQ.ID.NOS.:9-12).

Figure 5 shows Southern blot analysis of flax genomic DNA probed with flax oleosin DNA sequences.

10 Figure 6 shows a Northern blot analysis of the seed specific expression of flax oleosins.

Figure 7 shows a Northern blot analysis of the developmental expression of flax oleosins during seed development.

Figure 8 shows the GUS activity of flax embryos bombarded with flax oleosin promoter-GUS-flax terminator gene constructs.

15 Figure 9 shows GUS expression in developing flax embryos and Arabidopsis seeds of plants transformed with a 2S protein gene promoter GUS fusion.

Figure 10 shows the tissue-specific expression of GUS in transgenic flax plants transformed with a linin promoter-GUS-linin terminator gene construct.

20 Figure 11 shows the temporal expression of GUS in transgenic flax plants transformed a linin promoter-GUS-linin terminator gene construct.

Figure 12 shows the expression of GUS in transgenic *Brassica napus* plants (L1 to L9) transformed with a linin promoter-GUS-linin terminator gene construct.

25 Figure 13 shows the expression of GUS in transgenic Arabidopsis plants transformed with a linin promoter-GUS-linin terminator gene construct at different stages of seed development.

#### **DETAILED DESCRIPTION OF THE INVENTION**

As hereinbefore mentioned, the present invention relates to improved methods for the expression of non-native genes in plants, in particular flax. The invention provides methods allowing the seed-specific expression of non-native genes in flax. The methods of the invention are advantageous in that improved control over the expression of non-native genes in flax seeds is obtained. Expression of the non-native gene is restricted to the seeds, thereby limiting potential undesirable effects resulting from the expression in other plant organs or tissues. In addition, the provided methodology allows improved control over expression characteristics, such as the expression level of the non-native gene and timing of expression of the non-native gene in the developmental cycle of the plant. The methods of the present invention are particularly useful in that in accordance with the present invention the seed composition with respect to valuable raw materials, such as oil, protein and polysaccharides, may be altered both qualitatively and quantitatively.

Accordingly, in one aspect, the invention provides a method for the expression of a nucleic acid sequence of interest in flax seeds comprising:

- (a) preparing a chimeric nucleic acid construct comprising in the 5' to 3' direction of transcription as operably linked components;
  - 5 (1) a seed-specific promoter obtained from flax; and
  - (2) the nucleic acid sequence of interest wherein said nucleic acid of interest is non-native to said flax seed-specific promoter;
- (b) introducing said chimeric nucleic acid construct into a flax plant cell; and
- (c) growing said flax plant cell into a mature plant capable of setting seed,
  - 10 wherein said nucleic acid sequence of interest is expressed in the seed under the control of said flax seed-specific promoter.

As used herein, the term "non-native" refers to any nucleic acid sequence, including any RNA or DNA sequence, which is not normally associated with the seed-specific promoter. This includes heterologous nucleic acid sequences which are  
15 obtained from a different plant species as the promoter as well as homologous nucleic acid sequences which are obtained from the same plant species as the promoter but are not associated with the promoter in the wild-type (non-transgenic) plant.

The non-native nucleic acid sequence when linked to a seed-specific promoter obtained from flax results in a chimeric construct. The chimeric construct is introduced into a  
20 flax plant cell to create a transgenic flax plant cell which results in a detectably different phenotype of the flax plant cell or flax plant grown from it when compared with a non-transgenic flax plant cell or flax plant grown from it. A contiguous nucleic acid sequence identical to the nucleic acid sequence of the chimeric construct is not present in the non-transformed flax plant cell or flax plant grown from it. In this respect, chimeric nucleic  
25 acid sequences include those sequences which contain a flax promoter linked to a nucleic acid sequence obtained from another plant species or a nucleic acid sequence from flax but normally not associated with that promoter. Chimeric nucleic acid sequences as used herein further include sequences comprising a flax promoter and a nucleic acid sequence that is normally linked to the promoter but additionally containing a non-native nucleic acid  
30 sequence. For example, if the promoter is a flax seed-specific oleosin promoter, sequences "non-native" to the flax oleosin promoter also include a sequence comprising a fusion between the flax oleosin gene naturally associated with the oleosin promoter, and a coding sequence of interest that is not naturally associated with the promoter. The term non-native is also meant to include a fusion gene as hereinabove which additionally  
35 includes a cleavage sequence separating the nucleic acid sequence that is normally linked to the promoter sequence and the gene encoding the protein of interest.

The term "nucleic acid sequence" refers to a sequence of nucleotide or nucleoside monomers consisting of naturally occurring bases, sugars and intersugar (backbone) linkages.

The term also includes modified or substituted sequences comprising non-naturally occurring monomers or portions thereof, which function similarly. The nucleic acid sequences of the present invention may be ribonucleic (RNA) or deoxyribonucleic acids (DNA) and may contain naturally occurring bases including adenine, guanine, cytosine, thymidine and uracil. The sequences may also contain modified bases such as xanthine, hypoxanthine, 2-aminoadenine, 6-methyl, 2-propyl, and other alkyl adenines, 5-halo uracil, 5-halo cytosine, 6-aza uracil, 6-aza cytosine and 6-aza thymine, pseudo uracil, 4-thiouracil, 8-halo adenine, 8-amino adenine, 8-thiol adenine, 8-thio-alkyl adenines, 8-hydroxyl adenine and other 8-substituted adenines, 8-halo guanines, 8-amino guanine, 8-thiol guanine, 8-thioalkyl guanines, 8-hydroxyl guanine and other 8-substituted guanines, other aza and deaza uracils, thymidines, cytosines, adenines, or guanines, 5-trifluoromethyl uracil and 5-trifluoro cytosine.

The term "seed-specific promoter", means that a gene expressed under the control of the promoter is predominantly expressed in plant seeds with no or no substantial expression, typically less than 5% of the overall expression level, in other plant tissues.

In a further aspect, the present invention provides novel flax seed specific promoters useful for the expression of non-native genes in flax seeds and the seeds of other plant species. The promoters may be used to modify for example the protein, oil or polysaccharide composition of the seeds. In a preferred embodiment, the seed specific promoter comprises:

- (a) a nucleic acid sequence as shown in Figure 1 (SEQ.ID.NO.:1), Figure 2 (SEQ.ID.NO.:4), Figure 3 (SEQ.ID.NO.:6) or Figure 4 (SEQ.ID.NO.:8) wherein T can also be U;
- (b) a nucleic acid sequence that is complimentary to a nucleic acid sequence of (a);
- (c) a nucleic acid sequence that has substantial sequence homology to a nucleic acid sequence of (a) or (b);
- (d) a nucleic acid sequence that is an analog of a nucleic acid sequence of (a), (b) or (c); or
- (e) a nucleic acid sequence that hybridizes to a nucleic acid sequence of (a), (b), (c) or (d) under stringent hybridization conditions.

The term "sequence that has substantial sequence homology" means those nucleic acid sequences which have slight or inconsequential sequence variations from the sequences in (a) or (b), i.e., the sequences function in substantially the same manner and are capable of driving seed specific expression of non-native nucleic acid sequences. The variations may be attributable to local mutations or structural modifications. Nucleic acid sequences having substantial homology include nucleic acid sequences having at least 65%, more preferably at least 85%, and most preferably 90-95% identity with the nucleic acid sequences as shown in



Figure 1 (SEQ.ID.NO.:1), Figure 2 (SEQ.ID.NO.:4), Figure 3 (SEQ.ID.NO.:6) or Figure 4 (SEQ.ID.NO.:8).

The term "sequence that hybridizes" means a nucleic acid sequence that can hybridize to a sequence of (a), (b), (c) or (d) under stringent hybridization conditions. Appropriate "stringent hybridization conditions" which promote DNA hybridization are known to those skilled in the art, or may be found in Current Protocols in Molecular Biology, John Wiley & Sons, N.Y. (1989), 6.3.1-6.3.6. For example, the following may be employed: 6.0 x sodium chloride/sodium citrate (SSC) at about 45°C, followed by a wash of 2.0 x SSC at 50°C. The stringency may be selected based on the conditions used in the wash step. For example, the salt concentration in the wash step can be selected from a high stringency of about 0.2 x SSC at 50°C. In addition, the temperature in the wash step can be at high stringency conditions, at about 65°C.

The term "a nucleic acid sequence which is an analog" means a nucleic acid sequence which has been modified as compared to the sequence of (a), (b) or (c) wherein the modification does not alter the utility of the sequence (i.e. as a seed specific promoter) as described herein. The modified sequence or analog may have improved properties over the sequence shown in (a), (b) or (c). One example of a modification to prepare an analog is to replace one of the naturally occurring bases (i.e. adenine, guanine, cytosine or thymidine) of the sequence shown in Figure 1, Figure 2, Figure 3 or Figure 4 with a modified base such as xanthine, hypoxanthine, 2-aminoadenine, 6-methyl, 2-propyl and other alkyl adenines, 5-halo uracil, 5-halo cytosine, 6-aza uracil, 6-aza cytosine and 6-aza thymine, pseudo uracil, 4-thiouracil, 8-halo adenine, 8-aminoadenine, 8-thiol adenine, 8-thiolalkyl adenines, 8-hydroxyl adenine and other 8-substituted adenines, 8-halo guanines, 8 amino guanine, 8-thiol guanine, 8-thiolalkyl guanines, 8-hydroxyl guanine and other 8-substituted guanines, other aza and deaza uracils, thymidines, cytosines, adenines, or guanines, 5-trifluoromethyl uracil and 5-trifluoro cytosine.

Another example of a modification is to include modified phosphorous or oxygen heteroatoms in the phosphate backbone, short chain alkyl or cycloalkyl intersugar linkages or short chain heteroatomic or heterocyclic intersugar linkages in the nucleic acid molecule shown in Figure 1, Figure 2, Figure 3 or Figure 4. For example, the nucleic acid sequences may contain phosphorothioates, phosphotriesters, methyl phosphonates, and phosphorodithioates.

A further example of an analog of a nucleic acid molecule of the invention is a peptide nucleic acid (PNA) wherein the deoxyribose (or ribose) phosphate backbone in the DNA (or RNA), is replaced with a polyamide backbone which is similar to that found in peptides (P.E. Nielsen, et al Science 1991, 254, 1497). PNA analogs have been shown to be resistant to degradation by enzymes and to have extended lives *in vivo* and *in vitro*. PNAs also bind stronger to a complimentary DNA sequence due to the lack of charge repulsion

between the PNA strand and the DNA strand. Other nucleic acid analogs may contain nucleotides containing polymer backbones, cyclic backbones, or acyclic backbones. For example, the nucleotides may have morpholino backbone structures (U.S. Pat. No. 5,034,506). The analogs may also contain groups such as reporter groups, a group for  
5 improving the pharmacokinetic or pharmacodynamic properties of nucleic acid sequence.

In another aspect, the invention provides chimeric nucleic acid sequences comprising a first nucleic acid sequence obtained from flax operatively linked to a second nucleic acid sequence non-native to said first nucleic acid sequence wherein said first nucleic acid sequence comprises a novel flax seed-specific promoter. Preferably, the promoter is  
10 selected from the group of promoters comprising Figure 1, Figure 2, Figure 3 and Figure 4 or a nucleic acid sequence hybridizing thereto under stringent conditions.

In accordance with the present invention, the chimeric nucleic acid sequences can be incorporated in a known manner in a recombinant expression vector which ensures good expression in the seed cell. Accordingly, the present invention includes a recombinant  
15 expression vector comprising a chimeric nucleic acid sequence of the present invention suitable for expression in a seed cell.

The term "suitable for expression in a seed cell" means that the recombinant expression vectors contain the chimeric nucleic acids sequence of the invention, a regulatory region and a termination region, selected on the basis of the seed cell to be used for  
20 expression, which is operatively linked to the nucleic acid sequence encoding the polypeptide of desirable amino acid composition. Operatively linked is intended to mean that the chimeric nucleic acid sequence encoding the polypeptide is linked to a regulatory sequence and termination region which allows expression in the seed cell. A typical construct consists, in the 5' to 3' direction of a regulatory region complete with a promoter  
25 capable of directing expression in a plant, a polypeptide coding region and a transcription termination region functional in plant cells. These constructs may be prepared in accordance with methodology well known to those of skill in the art of molecular biology (see for example: Sambrook *et al.* (1990), *Molecular Cloning*, 2<sup>nd</sup> ed. Cold Spring Harbor Press). The preparation of constructs may involve techniques such as restriction digestion, ligation, gel  
30 electrophoresis, DNA sequencing and PCR. A wide variety of cloning vectors is available to perform the necessary cloning steps. Especially suitable for this purpose are the cloning vectors with a replication system that is functional in *Escherichia coli* such as pBR322, the pUC series M13mp series, pACYC184, pBluescript etc. Nucleic acid sequences may be introduced into these vectors and the vectors may be used to transform *E. coli* which may be  
35 grown in an appropriate medium. Plasmids may be recovered from the cells upon harvesting and lysing the cells. Final constructs may be introduced into plant vectors compatible with integration into the plant such as the Ti and Ri plasmids.

The methods for the expression of non-native genes in flax seeds in accordance with the present invention may be practiced using any flax seed-specific promoter and are not limited by the specific flax seed specific promoter that is selected. In preferred embodiments of the present invention, the flax seed-specific promoter confers to the non-native nucleic acid sequence at least one expression characteristic which is similar or identical to an expression characteristic conferred to the native nucleic acid sequence by the native promoter. The term "expression characteristic" as used herein refers to any measurable property or effect conferred by the flax seed-specific promoter to the nucleic acid sequence operably linked to the flax seed-specific promoter. Thus in preferred embodiments, timing of expression in the plant's life cycle, of the non-native nucleic acid sequence is similar or identical to timing of expression of the native nucleic acid sequence. In further preferred embodiments, the expression level of the heterologous nucleic acid sequence is similar or identical to the expression level of the native nucleic acid sequence. In yet further specific embodiments, the response of the non-native gene to alterations in lighting conditions, changes in wavelength or light intensity for example, changes in temperature, tissue wounding, changes in concentration of chemical agents, such as for example phytohormones and pesticides, is similar to the response of the native nucleic acid sequence to these stimuli. Other desired expression characteristics conferred by a flax seed-specific promoter may be recognized by those skilled in the art and a flax seed-specific promoter may be selected accordingly.

Flax-seed specific promoters that may be used in accordance with the present invention include promoters associated with seed storage proteins, such as all albumins and globulins, including the vicilin and legumin-like proteins, as well as seed-specific promoters not associated with seed storage proteins, such as oleosins. Of further particular interest are promoters associated with fatty acid metabolism, such as acyl carrier protein (ACP), saturases, desaturases, elongases and the like.

In preferred embodiments of the present invention the seed specific promoter used is an oleosin promoter, a legumin-like seed storage protein promoter or a 2S storage protein promoter. In particularly preferred embodiments the seed specific promoter has the sequence shown in Figure 1, Figure 2, Figure 3 or Figure 4 or any nucleic acid sequences obtainable from flax and hybridizing to any one of these four nucleic acid sequences under stringent conditions.

Additional flax seed-specific promoters may be used in accordance with the present invention. These promoters may be obtained in a number of ways. Where a flax seed protein has been isolated, it may be partially sequenced, so that a nucleic acid probe may be designed for identifying RNA specific to the seed. To further enhance the RNA specifically associated with the seed, cDNA may be prepared from seed cells and the cDNA may be subtracted with mRNA or cDNA from non-seed cells. The remaining seed

cDNA may then be used to probe a genomic DNA library for complementary sequences. Sequences hybridizing to the cDNA may subsequently be obtained and the associated promoter region may be isolated. It is also possible to screen genomic DNA libraries prepared from flax seed tissues using known seed specific genes from other plant species and subsequently isolate their associated promoters. Due to the relative abundance of seed-storage proteins in seeds it is also possible to obtain sequence information through random sequencing of flax seed cDNA libraries. Those cDNA sequences matching sequence of known seed-storage proteins could be used to identify the associated promoter. Databases containing sequence information from large scale sequencing from for example *Arabidopsis* and maize may be searched for known seed-specific proteins and/or promoters and the information may be used to identify promoter sequences in flax that share sequence similarity. Alternative methods to isolate additional flax seed specific promoters may be used and novel flax seed specific promoters may be discovered by those skilled in the art and used in accordance with the present invention.

The nucleic acid sequence of interest linked to the promoter may be any nucleic acid sequence of interest including any RNA or DNA sequence encoding a peptide or protein of interest, for example, an enzyme, or a sequence complementary to a genomic sequence, where the genomic sequence may be at least one of an open reading frame, an intron, a non-coding leader sequence, or any sequence where the complementary sequence will inhibit transcription, messenger RNA processing, for example splicing or translation. The nucleic acid sequence of interest may be synthetic, naturally derived or a combination thereof. As well, the nucleic acid sequence of interest could be a fragment of the natural sequence, for example just include the catalytic domain or a structure of particular importance. Depending upon the nature of the nucleic acid sequence of interest, it may be desirable to synthesize the sequence with plant preferred codons. The plant preferred codons may be determined from the codons of highest frequency in the proteins expressed in the largest amount in particular plant species of interest.

The nucleic acid sequence of interest may encode any of a variety of recombinant proteins. Examples of recombinant proteins which might be expressed by the methods of the present invention include proteins with a favorable catalytic function or a valuable protein that will accumulate to high levels and be extracted if desired. Proteins with a catalytic function, include, but are not limited to, proteins that confer a new biochemical phenotype on the developing seeds. New phenotypes could include such modifications as altered seed-protein or seed oil composition or seed polysaccharide composition, enhanced production of pre-existing desirable products or properties and the reduction or even suppression on an undesirable gene product using antisense, ribozyme or co-suppression technologies (Izant and Weintraub (1984) Cell 26: 1007-1015, antisense; Hazelhoff and

Gerlach (1988) Nature 334: 585-591, ribozyme; Napoli *et al.* (1990) Plant Cell 2: 279-289, co-suppression).

It is expected that the desired proteins would be expressed in all embryonic tissues, although varying cellular expression may be detected in the different embryonic tissues such as the embryonic axis and cotyledons. The nucleic acid sequence of interest may be expressed at any stage in seed development. The timing of expression may depend on the particular use of the invention. Expression of enzymes involved in oil modification may be desirable early in seed development, for example before accumulation of seed storage protein.

10 Besides the promoter region and the nucleic acid sequence of interest, a nucleic acid sequence capable of terminating transcription is typically included in expression vectors. Transcriptional terminators are preferably about 200 to about 1,000 nucleotide base pairs and may comprise any such sequences functional in plants, such as the nopaline synthase termination region (Bevan *et al.*, (1983) Nucl. Acid. Res. 11: 369-385), the phaseolin terminator (van der Geest *et al.*, (1994) Plant J. 6(3): 413-423), the terminator for the octopine synthase gene of *Agrobacterium tumefaciens* or other similarly functioning elements. These transcription terminator regions can be obtained as described by An (1987), Methods in Enzym. 153: 292 or are already present in plasmids available from commercial sources such as ClonTech, Palo Alto, California. The choice of the appropriate terminator  
15  
20 may have an effect of the rate of transcription.

The chimeric construct may further comprise enhancers such as the AMV leader (Jobling and Gehrke (1987), Nature 325: 622-625) or introns. It should be understood that the design of the expression vector may depend on such factors as the choice of the plant species and/or the type of polypeptide to be expressed.

25 The expression vectors will normally also contain a marker gene. Marker genes comprise all genes that enable distinction of transformed plant cells from non-transformed cells, including selectable and screenable marker genes. Conveniently, a marker may be a resistance marker to a herbicide, for example, glyphosate or phosphinothricin, or to an antibiotic such as kanamycin, G418, bleomycin, hygromycin, chloramphenicol and the like,  
30 which confer a trait that can be selected for by chemical means. Screenable markers may be employed to identify transformants through observation. They include but are not limited to the  $\beta$ -glucuronidase or *uidA* gene, a  $\beta$ -lactamase gene or a green fluorescent protein (Niedz *et al.* (1995) Plant Cell Rep. 14: 403).

In order to introduce nucleic acid sequences into plant cells in general a variety of  
35 techniques are available to the skilled artisan. *Agrobacterium*-mediated transformation for flax plant cells has been reported and flax transformants may be obtained in accordance with the methods taught by Dong and McHughen (1993) Plant Science 88: 61-77, although a

variety of other techniques (see below) may also be used to introduce the chimeric DNA constructs in flax cells if so desired.

Transformed flax plants grown in accordance with conventional agricultural practices known to a person skilled in the art are allowed to set seed. Flax seed may then be  
5 obtained from mature flax plants and analyzed for desired altered properties with respect to the wild-type seed.

Two or more generations of plants may be grown and either crossed or selfed to allow identification of plants and strains with desired phenotypic characteristics including production of the recombinant polypeptide. It may be desirable to ensure  
10 homozygosity in the plants to assure continued inheritance of the recombinant trait. Methods for selecting homozygous plants are well known to those skilled in the art of plant breeding and include recurrent selfing and selection and anther and microspore culture. Homozygous plants may also be obtained by transformation of haploid cells or tissues followed by regeneration of haploid plantlets subsequently converted to diploid plants by  
15 any number of known means (e.g. treatment with colchicine or other microtubule disrupting agents).

The present invention also includes transgenic flax seeds prepared according to a method comprising:

- (a) preparing a chimeric nucleic acid construct comprising in the 5' to 3'  
20 direction of transcription as operably linked components:
- (1) a seed-specific promoter obtained from flax; and
  - (2) a nucleic acid sequence of interest wherein said nucleic acid of interest is non-native to said seed-specific promoter;
- (b) introducing said chimeric nucleic acid construct into a flax plant cell; and  
25 (c) growing said flax plant cell into a mature flax plant capable of setting seed wherein said nucleic acid sequence of interest is expressed in the seed under the control of said seed-specific promoter.

In preferred embodiments of the invention the seed-specific promoter is selected from the group of flax seed specific promoters consisting of, a 2S storage protein promoter, a  
30 globulin promoter, an oleosin promoter, and a legumin-like seed storage protein promoter. Specific promoter sequences are shown in Figure 1 (SEQ.ID.NO.:1), Figure 2 (SEQ.ID.NO.:4), Figure 3 (SEQ.ID.NO.:6) and Figure 4 (SEQ.ID.NO.:8).

The present invention further provides flax plants capable of setting seed prepared by a method comprising:

- (a) preparing a chimeric nucleic acid construct comprising in the 5' to 3'  
35 direction of transcription as operably linked components:
- (1) a seed-specific promoter obtained from flax; and

- (2) a nucleic acid sequence of interest wherein said nucleic acid of interest is non-native to said seed-specific promoter;
- (b) introducing said chimeric nucleic acid construct into a flax plant cell; and
- (c) growing said flax plant cell into a mature flax plant capable of setting seed
- 5 wherein said nucleic acid sequence of interest is expressed in the seed under the control of said seed-specific promoter.

The present invention further provides methods of use for the novel promoters shown in Figure 1 (SEQ.ID.NO.:1), Figure 2 (SEQ.ID.NO.:4), Figure 3 (SEQ.ID.NO.:6) and Figure 4 (SEQ.ID.NO.:8) in plant species other than flax. Accordingly, the invention also

10 includes the preparation of chimeric nucleic acid constructs comprising a promoter selected from the group promoters shown in Figure 1, Figure 2, Figure 3 and Figure 4 and a nucleic acid sequence of interest, and expression in a seed-specific manner of the nucleic acid sequence of interest in plant species other than flax and under the control of the flax promoter.

In another aspect of the present invention there is provided a method for the

15 expression of a nucleic acid sequence of interest in plant seeds comprising:

- (a) preparing a chimeric nucleic acid construct comprising in the 5' to 3' direction of transcription as operably linked components;
- (1) a seed-specific promoter selected from the group of seed-specific promoters consisting of
- 20 (i) a nucleic acid sequence as shown in Figure 1 (SEQ.ID.NO.:1), Figure 2 (SEQ.ID.NO.:4), Figure 3 (SEQ.ID.NO.:6) or Figure 4 (SEQ.ID.NO.:8) wherein T can also be U;
- (ii) a nucleic acid sequence that is complimentary to a nucleic acid sequence of (i);
- 25 (iii) a nucleic acid sequence that has substantial sequence homology to a nucleic acid sequence of (i) or (ii); and
- (iv) a nucleic acid sequence that is an analog of a nucleic acid sequence of (i), (ii) or (iii);
- (v) a nucleic acid sequence that hybridizes to a nucleic acid sequence of
- 30 (i), (ii), (iii) or (iv) under stringent hybridization conditions; and
- (2) said nucleic acid of interest;
- (b) introducing the chimeric nucleic acid construct into a plant cell;
- (c) growing said plant cell into a mature plant capable of setting seed, wherein said nucleic acid sequence of interest is expressed in the seed under the control of said
- 35 seed-specific promoter.

A variety of techniques are available for the introduction of nucleic acid sequences, in particular DNA, into plant host cells in general. For example, the chimeric DNA constructs may be introduced into host cells obtained from dicotyledonous plants, such

as tobacco, and oleoagenous species, such as *Brassica napus* using standard *Agrobacterium* vectors by a transformation protocol such as described by Moloney *et al.* (1989), Plant Cell Rep. 8: 238-242 or Hinchee *et al.* (1988) Bio/Technol. 6: 915-922; or other techniques known to those skilled in the art. For example, the use of T-DNA for transformation of plant cells  
5 has received extensive study and is amply described in EP 0 120 516, Hoekema *et al.*, (1985), Chapter V In: *The Binary Plant Vector System* Offset-drukkerij Kanters BV, Alblasserdam); Knauf *et al.* (1983), *Genetic Analysis of Host Expression by Agrobacterium*, p. 245, In: *Molecular Genetics of Bacteria-Plant Interaction*, Puhler, A. ed. Springer-Verlag, NY); and An *et al.*, (1985), (EMBO J., 4: 277-284). *Agrobacterium* transformation may also be  
10 used to transform monocot plant species (US Patent 5,591,616).

Conveniently, explants may be cultivated with *Agrobacterium tumefaciens* or *Agrobacterium rhizogenes* to allow for the transfer of the transcription construct in the plant host cell. Following transformation using *Agrobacterium* the plant cells are dispersed into an appropriate medium for selection, subsequently callus, shoots and eventually plants  
15 are recovered. The *Agrobacterium* host will harbour a plasmid comprising the vir genes necessary for transfer of the T-DNA to plant cells. For injection and electroporation (see below) disarmed Ti-plasmids (lacking the tumour genes, particularly the T-DNA region) may be introduced into the plant cell.

The use of non-*Agrobacterium* techniques permits the use of constructs described  
20 herein to obtain transformation and expression in a wide variety of monocotyledonous and dicotyledonous plant species. These techniques are especially useful for transformation of plant species that are intractable in an *Agrobacterium* transformation system. Other techniques for gene transfer include particle bombardment (Sanford, (1988), Trends in Biotechn. 6: 299-302), electroporation (Fromm *et al.*, (1985), PNAS USA, 82: 5824-5828;  
25 Riggs and Bates, (1986), PNAS USA 83: 5602-5606), PEG mediated DNA uptake (Potrykus *et al.*, (1985), Mol. Gen. Genetics., 199: 169-177), microinjection (Reich *et al.*, Bio/Techn. (1986) 4:1001-1004) and silicone carbide whiskers (Kaepler *et al.* (1990) Plant Cell Rep. 9: 415-418).

In a further specific applications such as to *B. napus*, the host cells targeted to  
30 receive recombinant DNA constructs typically will be derived from cotyledonary petioles as described by Moloney *et al.* (1989) Plant Cell Rep. 8: 238-242. Other examples using commercial oil seeds include cotyledon transformation in soybean explants (Hinchee *et al.*, (1988) Bio/Technol. 6: 915-922) and stem transformation of cotton (Umbeck *et al.*, (1987) Bio/Technol. 5: 263-266).

35 Following transformation, the cells, for example as leaf discs, are grown in selective medium. Once the shoots begin to emerge, they are excised and placed onto rooting medium. After sufficient roots have formed, the plants are transferred to soil. Putative transformed plants are then tested for presence of a marker. Southern blotting is performed



on genomic DNA using an appropriate probe, to show integration into the genome of the host cell.

The methods provided by the present invention can be used in conjunction a broad range of plant species. Particularly preferred plant cells employed in accordance with the present invention include cells from the following plants: soybean (*Glycine max*), rapeseed (*Brassica napus*, *Brassica campestris*), sunflower (*Helianthus annuus*), cotton (*Gossypium hirsutum*), corn (*Zea mays*), tobacco (*Nicotiana tabacum*), alfalafa (*Medicago sativa*), wheat (*Triticum* sp.), barley (*Hordeum vulgare*), oats (*Avena sativa* L.), sorghum (*Sorghum bicolor*), *Arabidopsis thaliana*, potato (*Solanum* sp.), flax/linseed (*Linum usitatissimum*), safflower (*Carthamus tinctorius*), oil palm (*Eleais guineeis*), groundnut (*Arachis hypogaea*), Brazil nut (*Bertholletia excelsa*) coconut (*Cocus nucifera*), castor (*Ricinus communis*), coriander (*Coriandrum sativum*), squash (*Cucurbita maxima*), jojoba (*Simmondsia chinensis*) and rice (*Oryza sativa*).

The present invention has a variety of uses which include improving the intrinsic value of plant seeds by their accumulation of altered polypeptides or novel recombinant peptides or by the incorporation or elimination or a metabolic step. Use of the invention may result in improved protein quality (for example, increased concentrations or essential or rare amino acids), improved liquid quality by a modification of fatty acid composition, or improved or elevated carbohydrate composition. Examples include the expression of sulfur-rich proteins, such as those found in lupins or brazil nuts in a seed deficient in sulphurous amino acids. Improved protein quality could also be achieved by the expression of a protein or a fragment of a protein that is enriched in essential amino acids including lysine, cysteine, methionine and tryptophan. Alternatively, a fatty acyl coenzyme A, a transferase enzyme capable of modifying fatty acid ratios in triglycerides (storage lipid) could be expressed. In cases where a recombinant protein is allowed to accumulate in the seed, the protein could also be a peptide which has pharmaceutical or industrial value. In this case the peptide could be extracted from the seed and used in crude or purified form as appropriate for the intended use. As well, the polypeptides that are expressed in the seeds can be fragments or derivatives or the native protein. Pharmaceutically useful proteins may include, but are not limited to, anticoagulants, such as hirudin, antibodies, including monoclonal antibodies and antibody fragments, vaccines, cytokines or growth factors such as bovine growth factor, cholinergic differentiation factor (CDF), ciliary neurotrophic factor (CNTF), fibroblast growth factor (FGF), fish growth factor, gonadotropin, granulocyte-colony stimulating factor (G-CSF), granulocyte-macrophage colony-stimulating factor (GM-CSF), human growth hormone, interferon alpha (IFN- $\alpha$ ), interferon beta (IFN- $\beta$ ), interferon gamma (IFN- $\gamma$ ), interleukin 1-alpha (IL1- $\alpha$ ), interleukin 1-beta (IL1- $\beta$ ), interleukin-2 (IL-2), interleukin-3 (IL-3), interleukin-4 (IL-4), interleukin-5 (IL-5), interleukin-6 (IL-6), interleukin-10 (IL-10), leukemia inhibitory factor

(LIF), thioredoxin, macrophage colony-stimulating factor (M-CSF), myelomonocytic growth factor, nerve growth factor (NGF), oncostatin M, platelet-derived growth factor (PDGF), prolactin, transforming growth factor alpha (TGF- $\alpha$ ), transforming growth factor beta2 (TGF- $\beta$ 2), tumour necrosis factor alpha (TNF- $\alpha$ ), and tumour necrosis factor beta (TNF- $\beta$ ). Pharmaceutically useful proteins can also include mammalian proteins, for example, but not limited to  $\alpha$ -1-antitrypsin, anti-obesity proteins, blood proteins, collagen, collagenase, elastin, elastase, enteropeptidase, fibrinogen, haemoglobin, human serum albumin, insulin, lactoferrin, myoglobin and pulmonary surfactant proteins.

Industrially useful peptides may include, but are not limited to  $\alpha$ -amylase or other amylases, amyloglucosidase, arabinase, catalase, cellobiohydrolase, cellulases, chitinases, chymotrypsin, dehydrogenases, endo-glucanase, chymosin, endo-galactanase, esterases,  $\beta$ -galactosidase,  $\alpha$ -galactosidase or other galactosidases, gastric lipases, glucanases, glucose isomerase, hemi-cellulases, hydrolases, isomerase, ligninases, lipases, lyases, lysozymes, oxidases, oxidoreductase, papain, pectinases, pectin lyase, peroxidases, phosphatases, phytase, proteases, pullulanases, reductases, serine proteases, thioredoxin, transferase, trypsin, and xylanase.

The following non-limiting examples are illustrative of the present invention:

#### **EXAMPLES**

##### **EXAMPLE 1**

##### **Isolation of Seed-Specific Flax Promoters**

Seed specific cDNA clones were isolated from a flax seed specific cDNA-library. These cDNA clones were sequenced and the Basic Local Alignment Search Tool (BLAST) was used to compare these sequences against others in public databases such as Genbank. This comparison revealed that the deduced amino acid sequence of several of the isolated cDNAs had a high degree of similarity to both the low and high molecular weight class of oleosins, 2S-albumin and legumin-like storage proteins. Probes were prepared individually from (portions of) cDNAs encoding oleosins, 2S albumin and legumin-like storage proteins and these were used to screen a genomic library prepared from the flax line Forge that is homozygous for four rust resistance genes (Anderson *et al.* (1997), *The Plant Cell* 9: 641-651). Several positive lambda clones for each probe were identified after high-stringency screening. The inserts were subcloned into the plasmid vector pBluescript and sequenced. Sequence information revealed that we had isolated the genomic counterparts to the oleosins, 2S albumin and cDNAs *legumin-like* cDNAs. Sequence information of the genomic clones containing sequences encoding a high and low molecular weight oleosin isoforms, 2S albumin and a legumin-like gene are presented in Figures 1 to 4 respectively.

Figure 1 and SEQ.ID.NO.:1 shows the DNA sequence of a flax genomic clone encoding a 16.0 kDa oleosin protein (low molecular weight or L-isoform). Putative regulatory elements are identified and indicated. These include inverted repeats (base

pairs 805 to 813 and 821 to 829; base pairs 1858 to 1866 and 1877 to 1885), direct repeats (base pairs 184 to 193 and 1102 and 1111; base pairs 393 to 402 and 1701 to 1710; base pairs 683 to 692 and 1546 to 1555; base pairs 770 to 781 and 799 to 810; base pairs 955 to 964 and 1936 to 1945; base pairs 1483 to 1496 and 1513 to 1526), the abscisic acid responsive element (ABRE) (base pairs 1859 to 1866), CACA box (base pairs 1933 to 1936), TATA box (base pairs 1925 to 1931) and CAT box (base pairs 1989 to 1993). As well, the poly adenylation signal is indicated (base pairs 3020 to 3025). The open reading frame is interrupted by 1 short intron (which are marked) and the 2 exons are translated and indicated in IUPAC single letter amino-acid codes.

10 Figure 2 and SEQ.ID.NO.:4 shows the DNA sequence of a flax genomic clone encoding a 18.6 kDa oleosin protein (high molecular weight or H-isoform). Putative regulatory elements are identified and indicated. These include direct repeats (base pairs 14 to 25 and 1427 to 1438; base pairs 80 to 89 and 1242 to 1251; base pairs 177 to 186 and 837 to 846; base pairs 1281 to 1290 and 1242 to 1251; base pairs 1591 to 1600 and 1678 to 1287). The open reading frame is not interrupted by introns and is translated and indicated in IUPAC single letter amino-acid codes.

Figure 3 and SEQ.ID.NO.:6 shows the DNA sequence of the flax genomic clone encoding a 2S storage protein. Nucleotide sequencing of this clone revealed it to have an open reading frame of 174 amino acids that showed homology to the plant 2S storage group of proteins. The sequence encodes an open reading frame with 38% overall similarity to a *Brassica oleracea* 2S storage protein, including complete conservation of the glutamine-rich stretch QQQGQQGQQQ (SEQ.ID.NO.:13). In addition, the 2S storage protein gene promoter contained several putative promoter regulatory elements. These include AT rich repeats (base pairs 25-36, 97-108 and 167-190), RY-like repeat (base pairs 240-247), G-box-like element (base pairs 274-280), seed specific box-like motif (base pairs 285-290) and TATA box (base pairs 327-333).

Figure 4 and SEQ.ID.NO.:8 shows the DNA sequence of a flax genomic clone encoding a 54.4 kDa flax legumin-like seed storage protein. This legumin-like seed storage protein gene will also be referred to as "linin". The deduced amino acid sequence of the linin gene was compared to the *legumin-like* protein from *R. communis*, the legumin precursor from *M. salicifolia*, *Q. robur* and *G. hirsutum*, the glutelin precursor from *O. sativa* and a 12 S seed storage protein from *A. thaliana*. The linin gene shows a sequence identity/similarity with the corresponding proteins from *R. communis*, *M. salicifolia*, *Q. robur*, *G. hirsutum*, *O. sativa* and *A. thaliana* of 59/15, 47/16, 50/17, 45/17, 43/18 and 43/18 percent respectively. Putative regulatory elements in the promoter region are identified and indicated. These include inverted repeats (base pairs 265 to 276 and 281 to 292; base pairs 513 to 524 and 535 to 545), repeats (base pairs 1349 to 1360 and 1367 to 1378; base pairs 1513 to 1529 and 1554 to 1572), the abscisic acid responsive element (ABRE) (base pairs 1223 and

1231), legumin box (RY repeats) (between base pairs 1223 and 1231), a possible vicilin box region (base pairs 1887 to 1894), CAAT box (base pairs 1782 to 1785) and TATA box (base pairs 1966 to 1970). As well, the signal peptide for ER membrane targeting is indicated (base pairs 2034-2080). The open reading frame is interrupted by 3 short introns (which are  
5 marked) and the 4 exons are translated and indicated in IUPAC single letter amino-acid codes.

Figure 5 shows Southern blot analysis of flax genomic DNA. 60 µg of flax genomic DNA was isolated from leaves, digested with EcoRI (lane 1), HindIII (lane 2) and BamHI (lane 3) and was loaded into the respective lanes. A) Hybridizations were performed with  
10 random primed <sup>32</sup>P-labelled 3T cDNA (high molecular weight flax oleosin isoform). B) Hybridizations were performed with random primed <sup>32</sup>P-labelled 7R cDNA (low molecular weight flax oleosin isoform). The results demonstrate that both 3T (high molecular weight oleosin isoform) and 7R (low molecular weight oleosin isoform) oleosin cDNAs hybridize with flax genomic DNA. More specifically the results indicate that 3T is likely to  
15 represent a 2-copy gene in flax, as seen by two bands in each lane of digestion. Similarly, 7R is likely to represent a multigene family in flax as multiple bands were detected for each digestion.

#### **EXAMPLE 2**

##### **Seed specific expression of flax oleosin genes**

20 Figure 6 shows a Northern blot analysis of the seed specific expression of flax oleosins. Northern hybridization of the two oleosin mRNA in different tissues. Ten µg of total RNA was extracted from different tissues, R, root; C, cotyledon; L, leaf; S, seed capsule; E, embryo. The membrane was probed with (A) cDNA encoding high molecular weight (H)-isoform (identical to coding sequence as presented in Figure 2) and (B) cDNA  
25 encoding low molecular weight (L) -isoform (identical to coding sequence as presented in Figure 1). Both the transcripts are expressed only in the embryo and seed capsule, which contains embryos.

#### **EXAMPLE 3**

##### **Developmental expression of flax oleosin genes during seed development**

30 Figure 7 shows a Northern blot analysis of the developmental expression of flax oleosins during seed development. 15 µg per lane of total RNA was loaded in each lane on agarose/formaldehyde gel and blotted onto HybondN+ membrane. 10J: This membrane was probed using the <sup>32</sup>P dCTP labeled flax oleosin cDNA clone (low molecular weight isoform). Stages indicated are the number of days past anthesis (DPA). 3T) 15 µg per lane of total  
35 RNA was loaded in each lane on agarose/formaldehyde gel and blotted onto HybondN+ membrane. 3T: This membrane was probed using the <sup>32</sup>P dCTP labeled flax oleosin cDNA clone (high molecular weight isoform). Both the transcripts were expressed very early in

development (6DPA, early cotyledonary stage). Expression is maximum at 16 to 20 DPA (late cotyledonary stage) and declines at 22 DPA (mature embryos).

#### **EXAMPLE 4**

##### **Transient Seed specific expression of $\beta$ -glucuronidase (GUS) when under the regulatory control of flax oleosin regulatory sequences**

Two constructs were made using standard molecular biology techniques (eg see Sambrook *et al.* (1990), Molecular Cloning, 2nd ed. Cold Spring Harbor Press, including restriction enzyme digestions, ligation and polymerase chain reaction (PCR).

**Construct pSC54:** The  $\beta$ -glucuronidase reporter coding sequence from vector GUSN358>S (Clontech Laboratories) was placed between the promoter sequence from nucleotide 21 to 1852 and terminator sequence from 2395 to 3501 (as described in Figure 1). This insert was cloned into pBluescript and the resulting vector is called pSC54

**Construct pSC60:** The  $\beta$ -glucuronidase reporter coding sequence from vector GUSN358>S (Clontech Laboratories) was placed between the promoter sequence from nucleotide 1 to 2023 and terminator sequence from 2867 to 3925 (as described in Figure 2). This insert was cloned into pBluescript and the resulting vector is called pSC60.

pSC54, pSC60 and a promoter-less GUS construct (Control) were introduced into the flax embryos using particle bombardment using standard protocols (eg see Abenes *et al.* (1997) Plant Cell reports 17:1-7). Figure 8 shows the GUS activity of flax embryos bombarded with pSC54, pSC60 and a promoterless GUS construct measured 48 hours after particle bombardment. As can be seen the flax oleosin regulatory sequences are sufficient to drive the expression of GUS in flax embryos.

#### **EXAMPLE 5**

##### **Stable seed specific expression of $\beta$ -glucuronidase (GUS) in flax and Arabidopsis when under the regulatory control of flax 2S storage protein gene promoter**

A GUS reporter gene construct was made by incorporating 5' and 3' regions from the DNA fragment described in Figure 3 into promoterless-GUS pBI101 vector as follows.

A 400bp amplicon from the 5' end of the DNA fragment described in Figure 3 was PCR amplified using the following primers (location shown in Fig 3):

5' primer(1): 5'-TCCAATATGTAGGTCATA-3' (SEQ.ID.NO.:14)

3' primer(1): 5'-CTTTAAGGTGTGAGAGTC-3' (SEQ.ID.NO.:15)

The PCR primers also contained restriction sites for HindIII and BamHI which were used to clone the 400bp 5'UTR amplicon into the HindIII/BamHI sites of the pBI101 vector in front of the GUS reporter gene. A 736bp amplicon from the 3' untranslated region (3'UTR) of the DNA fragment described in Figure 3 was PCR amplified using the following primers (location shown in Fig 3):

5' primer (2):5'-AGGGGTGATCGATTA-3' (SEQ.ID.NO.:16)

3' primer (2):5'-GATAGAACCCACACGAGC-3' (SEQ.ID.NO.:17)

The PCR primers also contained restriction sites for SacI and EcoRI. The NOS terminator region of the pBI101 vector was cut out with SacI/EcoRI digestion and replaced with the similarly digested 736bp 3'UTR amplicon of the DNA fragment described in Figure 3.

5 The GUS reporter construct was then electroporated into *Agrobacterium tumifaciens* strain AGL1 and transformation of flax (Finnegan *et al.* (1993) Plant Mol Biol. 22(4): 625-633) and *Arabidopsis* (Valvekens *et al.* Proc. Natl. Acad. Sci. 85: 5536-5540) carried out according to previously described protocols.

10 Various tissues from flax and *Arabidopsis* plants carrying the GUS reporter construct were assayed histologically for evidence of GUS activity. In the case of flax, leaf tissue, root tissue and mid-maturity embryos dissected out of developing seeds were stained for GUS activity. For *Arabidopsis*, developing seeds were stained for GUS *in situ* in their siliques.

15 GUS staining was carried out by immersing the tissues in histochemical buffer containing 0.5 mM X-gluc, 0.5 M potassium phosphate buffer (pH 7.0), 1 mM EDTA, 0.5 M sorbital, 0.5 mM potassium ferricyanide and 0.5 mM potassium ferrocyanide. The staining reaction was carried out for 12-16 hrs at 37°C and the reaction was stopped by adding 95% ethanol. Tissues were subsequently cleared of chlorophyll by repeated washing in 95% ethanol prior to photography. Figure 9 shows clear evidence of strong GUS activity in 20 developing flax embryos and *Arabidopsis* seeds, and no evidence of GUS reporter gene expression in flax roots or leaves, or in *Arabidopsis* silique walls.

#### **EXAMPLE 6**

**Stable seed specific expression of  $\beta$ -glucuronidase (GUS) in flax, *Arabidopsis* and *Brassica napus* when under the regulatory control of flax legumin-like storage protein gene regulatory sequences**

25 A construct was made using standard molecular biology techniques, including restriction enzyme digestions, ligation and polymerase chain reaction (PCR). In order to obtain a DNA fragment containing approximately 2 kilobases from the 5' transcriptional initiation region of the flax legumin-like seed storage protein in a configuration suitable for 30 ligation to a GUS coding sequence, a PCR based approach was used. This involved the use of the polymerase chain reaction to amplify the precise sequence desired for the expression analysis. To perform the necessary PCR amplification, two oligonucleotide primers were synthesized (Beckman Oligo 1000M DNA synthesizer) have the following sequences:

5' primer: 5'*TATCTAGACTCAAGCATA*CGGACAAGGGT 3' (SJ-634) (SEQ.ID.NO.:18)

35 The italicized bases correspond to nucleotide positions 1 to 21 in the sequence reported in Figure 4. The additional nucleotides 5' of this sequence in the primer are not identical to the promoter sequence, but were included in order to place a XbaI site at the 5'

end of the amplification product. The XbaI (5'-TCTAGA-3') (SEQ.ID.NO.:19) site is underlined.

A second (3') primer was synthesized which had the following sequence:

3' primer 5'*GGTTATCATTGTATGAACTGA*3' (SJ-618) (SEQ.ID.NO.:20)

5 This primer contains the precise complement (shown in italics) to the sequence reported in Figure 4 from bases 2343 to 2363. This primer was not designed with an additional restriction enzyme site due to the fact that a natural NcoI site (5'-CCATGG-3') (SEQ.ID.NO.:21) straddles the start codon between base pairs 2034 and 2039, thereby allowing for insertion of the storage protein promoter into the appropriate cloning vector.

10 These two primers were used in a PCR amplification reaction to produce a DNA fragment containing the sequence between nucleotides 1 and 2342 of the flax seed storage protein gene with a XbaI site at the 5' end and a NcoI site 302 base pairs from the 3' end. PCR amplification was performed using the enzyme Pfu (Stratagene) using conditions recommended by the enzyme manufacturer and a temperature program of 94°C (denaturation) for 1 minute, 55°C (annealing) for 1 minute, and 72°C (elongation) for 3.5  
15 minutes. The template was the legumin seed storage protein genomic clone shown in Figure 4.

The resulting amplification product was subsequently digested with XbaI and NcoI to remove the desired 2 kb promoter region. This promoter fragment was cloned into  
20 the XbaI and NcoI sites of a XbaI and NcoI digested plasmid designated pGUS1318 (Plasmid pGUSN358S (Clontech Laboratories) was cut with NcoI and EcoRI and the GUS insert was cloned into pBluescriptKS+ (Stratagene) which was adapted to contain an NcoI site in the multiple cloning site.) The resulting plasmid containing the promoter-GUS fusion was called pPGUS1318. The terminator of the legumin seed storage protein from flax  
25 was also amplified from the above mentioned genomic clone. To perform the necessary PCR amplification, oligonucleotide primers were synthesized having the following sequences:

5' primer: 5' *GCAAGCTT*AATGTGACGGTGAAATAATAACGG 3' (SJ620) (SEQ.ID.NO.:22)

The italicized bases correspond to nucleotide positions 3780 to 3803 in the sequence reported in Figure 4. The additional nucleotides 5' of this sequence in the primer are not  
30 identical to the promoter sequence, but were included in order to place a HindIII site at the 5' end of the amplification product. The HindIII site (5'-AAGCTT-3') (SEQ.ID.NO.:23) is underlined.

A second (3') primer was synthesized which had the following sequence:

3' primer 5'*TAGGTACCTGGCAGGTAAAGACTCTGCTC*3' (SJ-618) (SEQ.ID.NO.:24)

35 This primer contains the precise complement (shown in italics) to the sequence reported in Figure 4 from bases 4311 to 4290. The additional nucleotides 5' of this sequence in the primer are not identical to the promoter sequence, but were included in order to place a

KpnI site at the 5' end of the amplification product. The KpnI site (5'-GGTACC-3') (SEQ.ID.NO.:25) is underlined.

5 These two primers were used in a PCR amplification reaction to produce a DNA fragment containing the sequence between nucleotides 3779 and 4311 of the flax seed storage protein gene terminator with a HindIII site at the 5' end and a KpnI site at 3' end. Amplification using PCT was as described above. The above pPGUS1318 vector that contains the amplified promoter was digested with XhoI and treated with Klenow to create a blunt end. The vector was subsequently digested with KpnI and the above amplified terminator sequence was inserted so that it was located 3' of the GUS coding  
10 sequence. The resulting vector containing the flax seed storage protein promoter, GUS and the flax seed storage protein terminator is referred to as pPGUST.

The XbaI-KpnI insert of pPGUST which contains the linin promoter-GUS coding sequence-linin terminator sequence was ligated into the XbaI-KpnI sites of pSBS3000 (This vector is a derivative from the *Agrobacterium* binary plasmid pPZP221 (Hajdukiewicz et al., 1994, Plant Molec. Biol. 25: 989-994). In pSBS3000 the plant gentamycin resistance gene of pPZP221 was replaced with parsley ubiquitin promoter-phosphinothricin acetyl transferase gene-parsley ubiquitin termination sequence to confer resistance to the herbicide glufosinate ammonium). The resulting vector is called pSBS2089. In addition the XbaI-KpnI insert of pPGUST which contains the linin promoter-GUS coding sequence-linin  
20 terminator sequence was ligated into the XbaI-KpnI sites of the *Agrobacterium* binary plasmid pCGN1559 (MacBride and Summerfield, 1990, Plant Molec. Biol. 14 269-276, confers resistance to the antibiotic kanamycin)). The resulting vector was called pSBS2083. Plasmids pSBS2089 and pSBS2083 were electroporated into *Agrobacterium* strain EHA101. *Agrobacterium* strain EHA101 (pSBS2089) was used to transform flax and *Arabidopsis*,  
25 *Agrobacterium* strain EHA101 (pSBS2083) was used to transform *Brassica napus*. Flax transformation was performed essentially as described in Jordan and McHughen (1988) Plant cell reports 7: 281-284, except transgenic shoots were selected on 10 µM L-phosphinothricine instead of kanamycin. *Arabidopsis* transformation was done essentially as described in "Arabidopsis Protocols; Methods in Molecular Biology" Vol 82. Edited by Martinez-Zapater JM and Salinas J. ISBN 0-89603-391-0 pg 259-266 (1998) except  
30 the putative transgenic plants were selected on agarose plates containing 80µM L-phosphinothricine. *Brassica napus* transformation was done essentially as described in Moloney *et al.* (1989). Plant Cell Reports. 8: 238-242.

Figure 10 shows the tissue-specific expression of GUS in transgenic flax plants  
35 transformed with a linin-GUS gene construct (pSBS2089). GUS expression was measured in roots (R), stems (S), leaves (L), Buds (B) and embryo (E). Some expression was seen in buds, and maximal expression was achieved in embryo tissues. No detectable expression was seen in any of the untransformed (WT) tissues.



Figure 11 shows the temporal expression of GUS in transgenic flax plants transformed with a linin-GUS gene construct (pSBS2089). As can be seen, maximum expression is achieved in mature (pre-dessicated) flax embryos.

5 Figure 12 shows the absolute expression of GUS in transgenic *Brassica napus* plants (L1 to L9) transformed with a linin-GUS gene construct (pSBS2083). As can be seen high level expression can be achieved in *Brassica napus* plants. When comparing individual transgenic plants, a typical variation in expression due to position effect can also be seen.

10 Figure 13 shows expression of GUS in transgenic *Arabidopsis* siliques (transformed with a linin-GUS gene construct (pSBS2089)) during seed development. As can be seen high level expression can also be achieved in *Arabidopsis* seed tissues. Maximum expression is achieved at stage 4 (mature but not fully dessicated) of seed development. No detectable expression is observed in non-seed tissues such as leaves, stems, roots and silique walls (results not shown).

15 While the present invention has been described with reference to what are presently considered to be the preferred examples, it is to be understood that the invention is not limited to the disclosed examples. To the contrary, the invention is intended to cover various modifications and equivalent arrangements included within the spirit and scope of the appended claims.

20 All publications, patents and patent applications are herein incorporated by reference in their entirety to the same extent as if each individual publication, patent or patent application was specifically and individually indicated to be incorporated by reference in its entirety.

**We Claim:**

1. A method for the expression of a nucleic acid sequence of interest in flax seeds comprising:
  - (a) preparing a chimeric nucleic acid construct comprising in the 5' to 3' direction of transcription as operably linked components:
    - (1) a seed-specific promoter obtained from flax; and
    - (2) said nucleic acid sequence of interest wherein said nucleic acid of interest is non-native to said seed-specific promoter;
  - (b) introducing said chimeric nucleic acid construct into a flax plant cell; and
  - (c) growing said flax plant cell into a mature flax plant capable of setting seed wherein said nucleic acid sequence of interest is expressed in the seed under the control of said seed-specific promoter.
  
2. The method according to claim 1 wherein at least one expression characteristic conferred by said seed-specific promoter to its native nucleic acid sequence is conferred to said non-native nucleic acid sequence.
  
3. The method according to claim 2 wherein said expression characteristic is timing of expression, level of expression, response to a change in lighting conditions, response to a change in temperature, response to a change in concentration of a chemical agent.
  
4. The method according to claim 1 wherein said flax seed-specific promoter is selected from the group of promoters comprising, oleosin promoters, 2S storage protein promoters and legumin-like seed-storage protein promoters.
  
5. The method according to claim 1 wherein said flax seed-specific promoter comprises:
  - (a) a nucleic acid sequence as shown in Figure 1 (SEQ.ID.NO.:1), Figure 2 (SEQ.ID.NO.:4), Figure 3 (SEQ.ID.NO.:6) or Figure 4 (SEQ.ID.NO.:8) wherein T can also be U;
  - (b) a nucleic acid sequence that is complimentary to a nucleic acid sequence of (a);
  - (c) a nucleic acid sequence that has substantial sequence homology to a nucleic acid sequence of (a) or (b);
  - (d) a nucleic acid sequence that is an analog of a nucleic acid sequence of (a), (b) or (c); or
  - (e) a nucleic acid sequence that hybridizes to a nucleic acid sequence of (a), (b), (c) or (d) under stringent hybridization conditions.

6. The method according to claim 1 wherein expression of said nucleic acid sequence of interest results in an alteration in protein or fatty acid composition in said seed.
7. Transgenic flax seed prepared according to a method comprising:
- 5 (a) preparing a chimeric nucleic acid construct comprising in the 5' to 3' direction of transcription as operably linked components:
- (1) a seed-specific promoter obtained from flax; and
- (2) a nucleic acid sequence of interest wherein said nucleic acid of interest is non-native to said seed-specific promoter;
- (b) introducing said chimeric nucleic acid construct into a flax plant cell; and
- 10 (c) growing said flax plant cell into a mature flax plant capable of setting seed wherein said nucleic acid sequence of interest is expressed in the seed under the control of said seed-specific promoter.
8. Transgenic flax seed according to claim 7 wherein at least one expression characteristic conferred by said seed-specific promoter to its native nucleic acid sequence is
- 15 conferred to said non-native nucleic acid sequence.
9. The method according to claim 8 wherein said expression characteristic is timing of expression or level of expression.
10. Transgenic flax seed according to claim 8 wherein said seed-specific promoter is a seed storage protein promoter, an oleosin promoter, a 2S storage protein promoter or a
- 20 legumin-like seed-storage protein promoter.
11. Transgenic flax seed according to claim 8 wherein said seed specific promoter comprises:
- (a) a nucleic acid sequence as shown in Figure 1 (SEQ.ID.NO.:1), Figure 2 (SEQ.ID.NO.:4), Figure 3 (SEQ.ID.NO.:6) or Figure 4 (SEQ.ID.NO.:8)
- 25 wherein T can also be U;
- (b) a nucleic acid sequence that is complimentary to a nucleic acid sequence of (a);
- (c) a nucleic acid sequence that has substantial sequence homology to a nucleic acid sequence of (a) or (b);
- 30 (d) a nucleic acid sequence that is an analog of a nucleic acid sequence of (a), (b) or (c); or

- (e) a nucleic acid sequence that hybridizes to a nucleic acid sequence of (a), (b), (c) or (d) under stringent hybridization conditions.
12. Transgenic flax seed according to claim 8 wherein expression of said non-native gene of interest results in an alteration in the seed protein or fatty acid composition.
- 5 13. Transgenic flax plants capable of setting seed prepared by a method a method comprising:
- (a) preparing a chimeric nucleic acid construct comprising in the 5' to 3' direction of transcription as operably linked components:
    - 10 (1) a seed-specific promoter obtained from flax; and
    - (2) a nucleic acid sequence of interest wherein said nucleic acid of interest is non-native to said seed-specific promoter;
  - (b) introducing said chimeric nucleic acid construct into a flax plant cell; and
  - (c) growing said flax plant cell into a mature flax plant capable of setting seed wherein said nucleic acid sequence of interest is expressed in the seed under the control of
  - 15 said seed-specific promoter.
14. An isolated nucleic acid sequence capable of directing seed-specific expression in a plant comprising:
- 20 (a) a nucleic acid sequence as shown in Figure 1 (SEQ.ID.NO.:1), Figure 2 (SEQ.ID.NO.:4), Figure 3 (SEQ.ID.NO.:6) or Figure 4 (SEQ.ID.NO.:8) wherein T can also be U;
  - (b) a nucleic acid sequence that is complimentary to a nucleic acid sequence of (a);
  - (c) a nucleic acid sequence that has substantial sequence homology to a nucleic acid sequence of (a) or (b); or
  - 25 (d) a nucleic acid sequence that is an analog of a nucleic acid sequence of (a), (b) or (c); or
  - (e) a nucleic acid sequence that hybridizes to a nucleic acid sequence of (a), (b), (c) or (d) under stringent hybridization conditions.
15. An isolated chimeric nucleic acid sequence comprising:
- 30 (a) a first nucleic acid sequence comprising a seed-specific promoter obtained from flax which comprises:
    - (1) a nucleic acid sequence as shown in Figure 1 (SEQ.ID.NO.:1), Figure 2 (SEQ.ID.NO.:4), Figure 3 (SEQ.ID.NO.:6) or Figure 4 (SEQ.ID.NO.:8) wherein T can also be U;

- (2) a nucleic acid sequence that hybridizes to a nucleic acid sequence of (a) under stringent hybridization conditions;
- (3) a nucleic acid sequence that is complimentary to a nucleic acid sequence of (a); or
- 5 (4) a nucleic acid sequence that has substantial sequence homology to a nucleic acid sequence of (a); and
- (b) a second nucleic acid sequence non-native to said flax seed-specific promoter.

16. A method for the expression of a nucleic acid sequence of interest in a plant seed  
10 comprising:

- (a) introducing the chimeric nucleic acid sequence according to claim 15 into a plant cell; and
- (b) growing said plant cell into a mature plant capable of setting seed,
- wherein the second nucleic acid sequence is expressed in the seed under the control of the  
15 seed specific promoter.

17. A method according to claim 16 wherein said plant cell is selected from the group of plants consisting of soybean (*Glycine max*), rapeseed (*Brassica napus*, *Brassica campestris*), sunflower (*Helianthus annuus*), cotton (*Gossypium hirsutum*), corn (*Zea mays*), tobacco (*Nicotiana tabacum*), alfalafa (*Medicago sativa*), wheat (*Triticum sp.*), barley  
20 (*Hordeum vulgare*), oats (*Avena sativa L.*), sorghum (*Sorghum bicolor*), *Arabidopsis thaliana*, potato (*Solanum sp.*), flax/linseed (*Linum usitatissimum*), safflower (*Carthamus tinctorius*), oil palm (*Eleais guineeis*), groundnut (*Arachis hypogaea*), Brazil nut (*Bertholletia excelsa*) coconut (*Cocus nucifera*), castor (*Ricinus communis*), coriander (*Coriandrum sativum*), squash (*Cucurbita maxima*), jojoba (*Simmondsia chinensis*) and rice  
25 (*Oryza sativa*).

18. A plant prepared according to the method of claim 16.

19. A plant cell comprising the chimeric nucleic acid sequence according to claim 15.

20. Plant seed comprising the chimeric nucleic acid sequence according to claim 15.

21. Plant seed obtained from a plant prepared according to the method of claim 16.

30 22. A recombinant expression vector comprising a nucleic acid sequence according to claim 14.

23. A recombinant expression vector comprising a nucleic acid sequence according to claim 15.

## FIGURE 1-1

1 ttcaaaaacccgattcccggaggcggccctattgaagatatgggggaagtctgacgagatcgatgctggtcgagtgctatg 80  
 81 gtgatggtgccggtttggggggaggatgagcgagatagccaagactagcattccggtcccacacagagttggaaatttga 160  
 161 ccaaatacacaacttgctgtattggagcgacgata<sub>R1</sub>ggggacgcggaaaaaacacatccggttgatcagggagtgttacgatg 240  
 241 atctcgagcccttatgtgcgaagaatccgaggtatgcttacgtgaactacagggatctcgacatcgggatgaatggagga 320  
 321 ggtgaaaggggatgagaagggtactttatggtgaggttggttgcgaaagtggttggtgtggtgtcgaactttgatcgggtt 400  
 401 ggttcgggtgaagcgattggtgatcccaataatggtttcgaacgagcagagcattcccctcaacttccaactcggttat 480  
 481 aaggatcaatgatcaatgagaatttcccttccaatgtgattacaagtctattgggtcagcttctcaactgctcctat 560  
 561 tcatttagattaatcataacaactattaattaccagcctttatccggcccgttgccgatttatttcttaagtttt 640  
 641 agatgaaatgaaaccgatttagttttattgagatgagattaatcttaatttgctt<sub>R3</sub>gaaatttactcaggttgatgga 720  
 721 tatttggaaataaactaaaatgataaataatcggataaaaaatattaaaaaataaataa<sub>R4</sub>caataaacaataa 800  
 801 aaataaataaa<sub>R4</sub>tttaatttatttcccttggttctgtatcacaatctcttcttacttcttaaggctt 880  
 881 ttcaattatcacttaataaatacaatagataaaatcgttaatctataaacctatacaccttgcaaggtgaacaat<sub>R5</sub> 960  
 961 caatagataataataataataataatcaattatactacaatttttaataaaagtatatgcggtcagtt 1040  
 1041 tctgcaagctccgagtccttgtcatcgttagtttctgcggtctcaaggataaacgactcgaggcagagccctt<sub>R1</sub>gtt 1120  
 1121 tccaatggacggggtgcatttctgccgctcgttgagctcgattggcgtgtcatgctgaggtcagagttcctacaaaaaac 1200  
 1201 cctaaactagaggggtgattagggtgaaaattaggggttgccctgggtccattgtccaaagttttagtcaacttaaaaac 1280  
 1281 agacttaatttatgcttcaaaaatagtttatctgttatataatagcgtgtaattagcttgacaatggggccggcagg 1360

FIGURE 1-2

1361 gtacggattcgggaccccgatccccgcccatagtgtaatggctcaactgccaagtgcagcattggaccgaaaattattggac 1440  
1441 acgaaagtactaatgtgaaaaacttttacattgtttatctacttctaataactatgctattttcaaaaattttgaactttaat 1520  
1521 actatgtttttatataatagtttagtataatcttaatttttatgcaaaattcatctaattgtattaaactattttcgatccgtag 1600  
1601 ctaattatttcgaaggcaagtcaaaagtgttattgtggactatgtgagctaatattgaaacctttatctctcccaccactc 1680  
1681 aagttaattgaaccaaactcgcggtgggttttcgagctatttcgagccattgttattatgacggtgagatatacaag 1760  
1761 attgaccgaaacacttttattatgataaatgtagaaaaaagaacaataattctaaagactacatgcatgcaaaagtgcacaaccct 1840  
1841 gcatggaaaagctgctcaacacggtggcatagactcccgccacgtgtccattccacctcactcaacccccaccggttcac 1920  
1921 ctcttattatatcacaacaatcaatcaatcctactcctccatactcgaacaaaatccgaccaacttataccaatattccca 2000  
TATA  
2001 aacttgattaatttctcagcaat ATG GAT CAG AGC CAC CAG ACA TAC GCC GGA ACC ACG CAG AAC CAT 2065  
1 M D Q T H Q T Y A G T T Q N 14  
2066 CCG AGC TAT GGC GGC GGC ACA ATG TAC CAG CAG CCG AGG TCT TAC CAG GCG 2125  
15 P S Y G G G T M Y Q Q Q P R S Y Q A 34  
2126 GTG AAG GCG ACT GCA GCC ACC GCG GGT GGA TCC CTC ATC GTT CTG TCC GGT CTC ATC 2185  
35 V K A A T A A T A G G S L I V L S G L I 54  
2186 CTT ACG GCC ACC GTC ATT TCA CTC ATC ATA GCC ACC CCT CTC CTT GTC ATC TTC AGC CCT 2245  
55 L T A T V I S L I I A T P L L V I F S P 74  
2246 GTT CTT GTC CCG GCT CTC ATC ACC GTC GGC CTC TTG ATC ACC GGG TTT CTT GCT TCC GGT 2305  
75 V L V P A L I T V G L L I T G F L A S G 94  
2306 GGG TTC GGA GTC GCC GTC ACC GTC TTG TCC TGG ATC TAT AG gtatgtataagcttttgactt 2370  
95 G F G V A A V T V L S W I Y R 109  
2371 tagtattgtataaaaatacataaagctgatttatgaacatggatctcccacaagaagttattaaatgcattctcgggtctg 2450



## FIGURE 1-3

2451 actcgatcgggttgggttttgagctactcgggtcacaatggtcgggtcggtctggtatctgttataactaataatgtggaagcc 2530  
 2531 tgaagtttcatgttctgtccccaacttcccactaccttttgagggtgtaagaagccatacaaaaactaattatgaaatcccct 2610  
 2611 cccaactcagaactcagtcagtggtgtgacggttctctataaaacatttcgaaaatctttgttcaatgaacgtag 2690  
 2691 aaatgaccatgcttgatgattgtgggtcttataag G TAC GTG ACC GGC GGG CAC CCG GCG GGA GGG 2756  
 110 Y V T G G H P A G G 119  
 2757 GAT TCG CTG GAC CAG GCT AGG TCG AAG CTG GCC GGA AAG GCC AGG GAG GTG AAG GAC AGG 2816  
 120 D S L D Q A R S K L A G K A R E V K D R 139  
 2817 GCG TCG GAG TTC GCA CAG CAG CAT GTC ACA GGT GGT CAA CAG ACC TCT TAA agagagtcctct 2879  
 140 A S E F A Q Q H V T G G Q T S \* 156  
 2880 agttaaattggtcttctgttctgttctgtggcgttgttaaactctctttaaagtgtgctgttttcccttctgtctcgtgt 2959  
 2960 gttgtaagtgaagtgaatcgaagtccaagtggagatgtttgtaacgatgatgtttcttaataatcagagatattaa 3039  
 Poly A signal  
 3040 aagggtgctaatttagtattgctgtctgatctcggaccacaactcgcaagtaaaattgcagaggatgagttgtacagaaca 3119  
 3120 agcgtgcattgttctggaagttcatctccttggagccgaccttgttctgagtttcgccaagtcaccactagacaatggtt 3199  
 3200 acgagttaagcctctgtcaaacagatcgctctagcgtcccagaaaaccaccagatttttcgaaaaaccatcggggatcaatt 3279  
 3280 ttcgattcaattccgatcttggaaagtacttgaacagaaagcatgatgctaaaagataatagaaaaatcgaaagcctagaaaaag 3359  
 3360 ttgtacagaaagcaacaagtcaaaaaatatagatcaacttcaaaagttcaaaattacatcttacagacccccaaaaaatgaca 3439  
 3440 gttaacagaagtcgactaaacagaaaccagccagcttcacctggaatgaaggagctttgatcaatccatcctagttcat 3519  
 3520 tcccccttgaattgcagacagagctctcatcctgtctaaagctgtggcttattcttaaccctgcaatcaataagcatga 3599  
 3600 actaacattggacaccttcatcggcgattgtctcgaaaatcagtgagcgggatttacctgtgtgtgtagtaaccctctc 3679

**FIGURE 1-4**

3680 tccttgatacaaaaatctggaaatccggcatcaactactgccacaccttctgcttaagtgattttatcaccaaggctga 3759  
3760 gcgtgattccttgctccttgctccgaatcctgatgtatccactgagccttccatctccttcccttccaggcttatgttc 3839  
3840 accaatgcgtcctcgcggaacacacactcttggcgtacaagtctgcagccaggaatccacactctccatcaagtgacagacct 3919  
3920 gcaaacccccaaataagaacacaaaactccaaaagtcaacgatcaattctccgcctttttatgaagaaaaaggaaaacttctgggt 3999  
4000 acttacgggtgccgtcagacacttcataattttagacttgatgatatgggtccaggaattccttctcgttctgaattgttgt 4079  
4080 gttaacagcaacctgacagacagaaaagatatcgcaaaatttaagatactgggatgactagggacacagagaaaatgaaatctaa 4159  
4160 ttctagaagtaaaaaccttattttcccattcaaatctgtcccacatagtcgggaacgcagcatccggagcaagaagcaggag 4239  
4240 agatgtaatcccatgatatcgatgtggatatcgttgaggacgacaactgaacgttcccatcacattgg 4305

FIGURE 2-1

1 tctagacatttgacataaaccggaattcaaagaacacaacattgactaacacccccaaaaagaaatagagtagtgaaatttggg 80  
R1  
81 agattaaaaaatagaaaaaactgattcttagaaaagaagagatgattaggtgcttccagttcggctctgtcaggaaatcga 160  
R2  
161 gatgttcaacttattacattgtcgaattcatctcccattgtcctgggtccctttactgtccgacgcttttttgaatcccag 240  
R3  
241 ttaattcccataagttccttcagctgcgtagcactgctagctccaacatggagcgtggagtctactcgttcatgggg 320  
321 catcgaaaaggttgccttcatgttctgtctaccagccagccccaccgctcttggttgtggaacaattgcggtgaagc 400  
401 gcgcaagttgacatcccatagtctcgacacttcaccatatggatgtttaaacgtatatacacgagtgcgatctacatgtc 480  
481 ccatcacaccacataaaagcaatagttgggagcttttcataataggaaacgggcattgacgacttggcctctcgataat 560  
561 ttaatctttttctcttcagctgattgtgtgcattccatcgggctcagaagcacatcaaaaggatctctccatcgtagt 640  
641 attgggtcgtgctatgatacgaagcagtcgatgaagttcctaattgtcggagctacaggctccgcaaaagacccccga 720  
721 ggtagatcgtagtaccacaaaaatcagtttgcgtagcggaaatcaacactagagactcaccctaataatgcatctcatg 800  
801 tgtgatgaacagtttatcatttgtgagtctaggggtcattgtcgatgaccccaatgcacattgagcttatgatagaatttg 880  
R3  
881 aataggaagcgttttccaccagatcacgaatagctaccctttttcggggcccaaatcccggtacatcttccacc 960  
961 acaacttaaagatgcgatcggtaaggaactcaccgaccacacacatcgaaataatcttcggtgaccggttcctgttgatca 1040  
1041 agtccctcaatttccctcaacctagtcttcaatcgccgctagcgttatccccccgataatggacttccatagcgggagcgt 1120  
1121 agccggagacgacgagcaagaaggatgagcggcgagattgcggctaaagaaacgagcttccctgcctctatggag 1200  
1201 gcagatttctgagttgatggtgattgtgatgtggacacttttaatttaagttgatttttagcacttccattcagc 1280  
1281 taattaaataaaatccagtattttatattttccttacgttatctaaatttttgaaagattaaaactttgatat 1360  
R4  
R2

FIGURE 2-2

6/24

1361 aggcaagatcatgacacgctcgaagtttaagtgaatgagactcctaacaaggtaataaacaagcagttcataaaaccgaatga 1440  
 R1  
 1441 ccttgatctttactactaagcttgagatcattgaacataataaataacgttaataagaagataaagaactttaataataaaaaa 1520  
 R4  
 1521 cattcaaaaacgagaaactgataaacaacaaagcaaacgccaacaaataatagacggtggaaggatgatgcagagcc 1600  
 R5  
 1601 atccaccctttttccaggtttccttactgcttacttctctatgcataatcacaagacgcccttgaaaacttgttagtcatg 1680  
 1681 cagagcccttactcgcaggtcaccgcaccacgtgttactctatcacttctcctccctttccttttaagaaccaccacgc 1760  
 R5  
 1761 cacctccctctcacaacactcataaaaaaacctcttgcatttctcccaagttcaaatagttcacagctaagcaag 1840  
 1841 aactcaaaaca ATG GCG GAT CGT ACA CAG CCA CAC CAA GTC CAG GTC CAC ACC CAG CAC 1903  
 1 M A D R T T Q P H Q V Q V H T Q H 17  
 1904 CAC TAT CCC ACC GGC GGT TTC GGC CGT TAT GAA GGT GGA CTC AAA GGC GGT CCA CAT 1963  
 18 H Y P T G G A F G R Y E G G L K G G P H 37  
 1964 CAC CAG CAA GGA TCA GGC AGC GGC CCA TCA GCT TCC AAG GTG TTA GCA GTC ATG ACC GCG 2023  
 38 H Q Q G S G S A S K V L A V M T A 57  
 2024 CTC CCC ATC GGC ACC CTC CTT GCC TTG GCC GGG ATA ACC TTG GCT GGG ACG ATG ATC 2083  
 58 L P I G G T L A L A G I T L A G T M I 77  
 2084 GGG CTG GCG ATC ACC CCG ATT TTT GTC ATC TGC AGC CCT GTT CTA GTC CCG GCC GCT 2143  
 78 G L A I T P I F V I C S P V L V P A A 97  
 2144 CTG CTC ATC GGG TTT GCC GTG AGC GCG TTT CTG GCC TCG GGG ATG GCC GGG CTG ACA GGG 2203  
 98 L L I G F A V S A F L A S G M A G L T G 117  
 2204 CTG ACC TCG CTG TCG TGG TTT GCG AGG TAT CTG CAG CAG GCT GGG CAG GGA GTT GGA GTG 2263  
 118 L T S L S W F A R Y L Q Q A G Q G V G V 137  
 2264 GGG GTG CCG GAT AGT TTC GAG CAG GCG AAG AGG CGC ATG CAG GAT GCT GCT GGG TAT ATG 2323  
 138 G V P D S F E Q A K R R M Q D A A G Y M 157

FIGURE 2-3

2324 GGG CAG AAG ACC AAG GAA GTT GGG CAG GAG ATC CAG AGG AAG TCT CAG GAT GTG AAA GCA 2383  
 158 G Q K T K E V G Q E I Q R K S Q D V K A 177  
 2384 TCA GAC AAA TAA ggtgataataaaggggttttgggttcgtgtgtaaaactggtaaaatggaattctgggttttactg 2459  
 178 S D K \* 181  
 2460 tacttttgcgatgtagtggaaatgaatgagttcttggttctcttttggttcttttaatacataaagaagaagcagcatttcatgt 2539  
 2540 tctggttgaatattgtcaagaattcgcaacaaattagctaaccagttcaatcttaccggttagacgacttcccagtaa 2619  
 2620 gaaacattccagggtccatcccgggtataaagagtctggacttctgaaacctttagaccttggatttggaaaaaagatgaaac 2699  
 2700 ctttagaataaattacaacgatggcagattgtacaaaactggagtcgagatcatgtaaaattagcccataaactaagaaccg 2779  
 2780 gcgatgacaacaataactactaggaatatggttgggtgctggcggtagcggatgatttggaaagaatcggggatcc 2859  
 2860 agaatgtgagaaccgaatcatcgacgaacattaccggcgaggagcccatttcaagcaacttggaaactcctatatggct 2939  
 2940 gtccagcagccacctgctcaagaaagaaagccatgtcagaaaatccttacgaaaatctaactggatgctgatatgaa 3019  
 3020 tccgccaggtgtgaggagtcttttacaggcaggatctataaagaagaaacatgttttggatttggcattggtgatgtcca 3099  
 3100 agcacgcagcgatctatctccggatccctaaacaaaaatacggattctgtaagaaacaagcgagaaaaacttctgcaac 3179  
 3180 gaaaccactcgtatatttggttctgagttggagaaagatgaccataactactgtatttggttgaaacttggattggaaccga 3259  
 3260 aattttgagttgaaaaagcagtgatcgtatataaaatttcagattcagattagगतatcctatgagagaaaggtagagttac 3339  
 3340 ctgatactacataactgcccattcaggggtaaaaagttgcctcgaagggttggagatggttccagggtctaaatccacaa 3419  
 3420 cgctgaacaaattaaaaagatgaatggatcaatcttcaacccttacttctgcatttatgaggattggctcaaggctctcta 3499  
 3500 ga 3501

8/24

FIGURE 3-1

1 tccactatgtaggtcatataccatcatttttaatttttgggaccatttcaattccatcttgccttttagggatgtgaatatga 80  
5' primer (1) AT rich  
81 acggccaaggtaagagaataaaaaataatccaaatataagcaagagagggccaagtaagataatccaaatgtacacttgtca 160  
AT rich  
161 tcgcccgaaatttagtaaaatacgcggcatattgtattcccacacattattaaataaccgtatatagtattggctgcatttgc 240  
241 atgaataaataactacgtgtaagccccaaaaagaccacgtgtagccccatggcaaaagttaaacactcacgacccccattcctcagt 320  
RY G box seed-specific  
321 ctccactataaaacccaccatcccccaatcttaccaaaaccacacagactcacaactcgactctcacaccttaaagaa 400  
TATA 3' primer (1)  
401 ccaatcaccacccaaaaaATGGCAAAGCTGATGAGCCTTAGCAGCCGTAGCAACGCGTAGCAAGCAGTTCCTTCCCTGATCGTGGTGAC 480  
1 M A K L M S L A A V A T Q F L F L I V V D 21  
481 GCATCCGTCGGAACCCACAGTGATTATCGACGAGGAGACCACCAAGCCGCGGTGGAGGCAAGGTGGCAGGGACAGCAGC 560  
22 A S V R T T V I I D E E T N Q G R G G K V A G T A A 48  
561 AGTCTGCGAGCAGCAGATCCAGCAGCGAGACTTCCTGAGGAGCTGCCAGCAGTTCATGTGGGAGAAAAGTCCAGAGGGCG 640  
49 V C E Q Q I Q Q R D F L R S C Q Q F M W E K V Q R G G 75  
641 GCCACAGCCACTATTACAACCAGGGCCGTGGAGGAGGCGAACCAGAGCCAGTACTTCGAACAGCTGTTTGTGACGACCTTA 720  
76 H S H Y N Q G R G G G E Q S Q Y F E Q L F V T T L 101  
721 AGCAATTGGCACCCGGGTGCACCATGCCAGGGGACTTGAAGCGTGCCATCGGCCAAAATGAGGCAGGAAAATCCAGCAGCA 800  
102 S N C A P R C T M P G D L K R A I G Q M R Q E I Q Q Q 128  
801 GGGACAGCAGGGACAGCAGCAGGAAGTTCAGAGGTGGATCCAGCAAGCTAAACAAAATCGCTAAGGACCTCCCCGGAC 880  
129 G Q Q Q G Q Q Q E V Q R W I Q Q A K Q I A K D L P G Q 155



10/24

FIGURE 4-1

10 20 30 40 50 60 70 80 90 100  
 ctcaagcatacggacaagggtaaataacatagtcaccagaacataataaacaacaaagtcgagaagcaagataaaaaaattagctatggacattcagggttc  
 110 120 130 140 150 160 170 180 190 200  
 atattgaaacatcattatcctagttgtgaccattcctcctgctctagttgagaggccttgggactaacgagaggtcagttgggatagcagatccc  
 210 220 230 240 250 260 270 280 290 300  
 ttatcctggactagccttctggtttcagagttcctggtcccgctctacatctatctccattaggctctgaagatgactcttcacacccaacgacggttt  
 310 320 330 340 350 360 370 380 390 400  
 aaggctctatcctactcctagcttgcataacctggcttgcataacctggagcatcgtgcacgatgattggatactgtggaggaggtgttggctgatt  
 410 420 430 440 450 460 470 480 490 500  
 tagagctccgggttgggtgatttgacttcgatttcagtttaggcttggtaaaatttttcagggtccattgtgaagccttttagagcttgagcttccttcca  
 510 520 530 540 550 560 570 580 590 600  
 tgttaatgccttgatcgaattctcctagagaaaaaggaagtcgatcctctgagattgaaatcgaaatcgaaatgtgcacatttttttccaacgtgtccaatcaatcca  
 610 620 630 640 650 660 670 680 690 700  
 caaacaagcagaagacaggtaattcttcatacttatactgacaagtaaatagcttaccgtcatgcataataaacgtctcgtttccttcaagaggggttttc  
 710 720 730 740 750 760 770 780 790 800  
 cgacatccataaacgaccccgagcctcatgaaagcattagggaaagaacttttggttcttctgtcatggcctttataggtgtcagccgagctcgccaattc  
 810 820 830 840 850 860 870 880 890 900  
 ccgctccgactggctccgcaaaaatattcgaacggcaagttatggacttgcaaccataactccacggtattgagcaggaccctattgtgaagactcatctcat  
 910 920 930 940 950 960 970 980 990 1000  
 ggagcttcagaatgtggttgtcagcaaaccaatgaccgaaaatccatcacatgacggacgtccagtggtgggtgagcgaacgaaacaggaagcgcctatcttt  
 1010 1020 1030 1040 1050 1060 1070 1080 1090 1100  
 cagagctcgtgagctccacaccggattccggcaactacgtgttggcaggttcgccgtattagagatatgttgaggcaagaccatctgtgccactcgtga  
 1110 1120 1130 1140 1150 1160 1170 1180 1190 1200  
 caattacgagaggtgtgtttttttgtgatttttccctaagtttctcgttgatggtgagctcatattctacatcgtatggtctctcaacgtcgtttcctctgcat

IR1

IR2



FIGURE 4-2

1210 1220 1230 1240 1250 1260 1270 1280 1290 1300  
ctgatatcccgtcatttgcatccacgtgcccgcctcccgtgccaagtccttaggtgtcatgcacgccaaaattggtggtggcggtgcccctgtgctt  
ABRE  
1310 1320 1330 1340 1350 1360 1370 1380 1390 1400  
ttaccgatgggtgaggttgagtttgggggtctccggcgatggtagtgggttgacgggttgggtgtgggttgacggcattgatcaatttacttcttgc  
R1  
1410 1420 1430 1440 1450 1460 1470 1480 1490 1500  
ttcaaatcttggcagaaaacaattcattagattagaactggaaccagagtgatgagacggattaagtcagattccaacagaggttacatctcttaaga  
R2  
1510 1520 1530 1540 1550 1560 1570 1580 1590 1600  
aataatgtaaccccttagactttatataatttgcaatataaaaaataatttaaccttttagacctttatataatagttttaactaaagtttaaccactcta  
R2  
1610 1620 1630 1640 1650 1660 1670 1680 1690 1700  
ttatttatatcgaaactatttgtagtctccccctctaaataaaacttggtattgtgtttacagaacctataatacaataactcaactgaagtgtg  
1710 1720 1730 1740 1750 1760 1770 1780 1790 1800  
tgcagttaattgaaggattaacgcccataatgcactagtagtattatcaaccgaatagattcacactagatggccatttccatcaataatcatgccggttctt  
1810 1820 1830 1840 1850 1860 1870 1880 1890 1900  
cttctgtccacatatcccctctgaaaacttgagagacacctgcaacttcattgtccttattacgtgttacaaaaatgaaaccccatgcatccatgcaaaactgaa  
Legumin Vicilin  
1910 1920 1930 1940 1950 1960 1970 1980 1990 2000  
gaaatggcgaagaacccttccccctccatttcttattgfgggaccatccatttaccatctcccgcctataaaaacaccccccatcacttcaactagaacatca  
CAAT TATA  
2010 2020 2030 2040 2050 2060 2070 2080 2090 2100  
tcactacttgcttatccatccaaaagatacccaccATGGGTAGATCATCAAGCCCTTTGGTTCTCTCACTGCAATTTTCGCCATTTCTCCACTCTTC  
M A R S S S P L L L S L C I F A I L F H S S  
Signal sequence  
2110 2120 2130 2140 2150 2160 2170 2180 2190 2200  
TCTGGGTAGGCAGCAATTCAGCAGGGGAACGGAGTGCAGATCGACAGGATCGAGCATCCGAGCCGGACAAAACCATCCAGGGAGAGCTGGCACCATC  
L G R Q Q F Q Q G N E C Q I D R I D A S E P D K T I Q A E A G T I  
2210 2220 2230 2240 2250 2260 2270 2280 2290 2300  
GAGGTATGGACCAGAACCCGAGCAATTCAGTGGCTGGTGTGCCGTTGTAAGGGCCACCATTGAGCCCAAAGGCTTCTTGGCTTTCTACAGCA  
E V W D Q N R Q Q F Q C A G V A V R R T I E P K G L L L P F Y S

12/24

FIGURE 4-3

2310 2320 2330 2340 2350 2360 2370 2380 2390 2400  
 ACACCCCTCAGCTCATCTACATCGTTCAAGgtataaaattaaatcagttcatacaaatgataaaccaccacttcgaatgtattttatcaaatatcaaatgatcga  
 N T P Q L I Y I V Q

2410 2420 2430 2440 2450 2460 2470 2480 2490 2500  
 tgcacctgtatgtgtgtatattcagTAGGGAGTTACAGGAATCATGTCCCAKAGATGTCCAGAGACATTCGAGGAATCCCAGGAGCAAGGACAAC  
 G R G V T G I M F P X C P E T F E S Q Q Q G Q

2510 2520 2530 2540 2550 2560 2570 2580 2590 2600  
 AGGGCCAACAGGGTAGTTCCCAAGACCAGCACCCAGAAAGATCCCGCCGTTCCGTGAAGGTGACGTCAATTGCCGTCCCTGCCGGTGTAGCCCACTGGTCCCTA  
 Q G Q Q G S S Q D Q H Q K I R R F R E G D V I A V P A G V A H W S Y

2610 2620 2630 2640 2650 2660 2670 2680 2690 2700  
 CAACGATGGCAACGAACCAGTCAATGGCCATTTGTTCCATGACACTTCCAGCCACCTCAACCAACTGGACAACAACCCCAAGGgtatataaagcattgcccgt  
 N D G N E P V M A I V V H D T S S H L N Q L D N N P R

2710 2720 2730 2740 2750 2760 2770 2780 2790 2800  
 agttgctaataaaattgcacacaatttgaactctatcttcagtatcttaataaacttttctcttttttggcagAACTTCTACTTGGCAGGAAACCCCGAGAGAC  
 N F Y L A G N P R D

2810 2820 2830 2840 2850 2860 2870 2880 2890 2900  
 GAGTTCGAACAATCGCAGCAAGGAGGCGGTGAGCCGTGGGGAGAGTGAAGGTGGACGAGGACGCGAGGGAACCTCTTCAACCTGCAACAACCTCTTCTT  
 E F E Q S Q Q G R L S R G E S E G R G R E P L Q P A T T S S

2910 2920 2930 2940 2950 2960 2970 2980 2990 3000  
 GCGGAATCGACTCCAAGCTCATCGCGGGGCGTTCAATGTTCGACGAGAACGTGGCAAGGAGGCTACAGAGCGGAGAACGACAACAGAGGCCAGATCGTCCG  
 C G I D S K L I A E A F N V D E N V A R R L Q S E N D N R G Q I V R

3010 3020 3030 3040 3050 3060 3070 3080 3090 3100  
 AGTCGAAGGGAGCTCGACATCGTACACTCCGACCAGTATCCAGGAGGAGTCCAGGAGGAGTCCAGGAGGAGTCCGTTGGTGGCCGCTACTCTCAATGGA  
 V E G E L D I V R P P T S I Q E E S Q E Q G G R G G R Y Y S N G

3110 3120 3130 3140 3150 3160 3170 3180 3190 3200  
 GTGGAGGAGACCTTCTGCTCCATGAGACTAATTGAGAAACATCGGCGATCCTTCTCGGGCAGACATTTTCACTCCAGAAAGCCCGCGGTTAGATCCCTCA  
 V E E T F C S M R L I E N I G D P S R A D I F T P E A G R V R S L

FIGURE 4-4

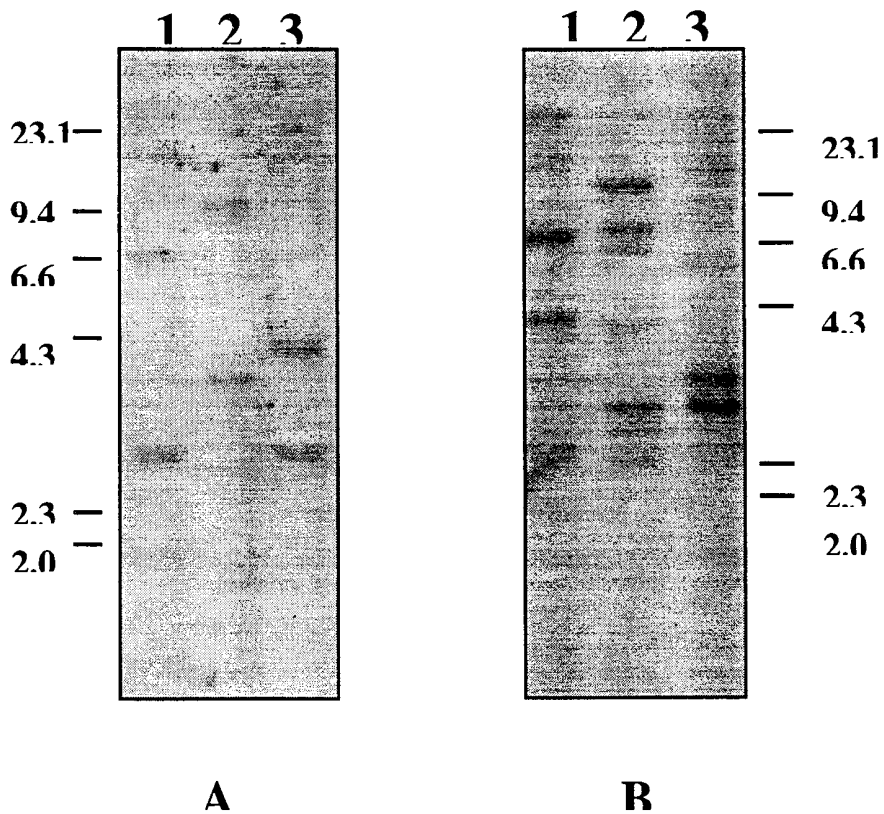
3210 3220 3230 3240 3250 3260 3270 3280 3290 3300  
ACAGCCACAACCTCCCCGTCTGCAATGGATCCAGCTTAGCGCCGAGAGGGCGTTCTCTACAATgtatagatctcactcagcaccacactctaaattga  
N S H N L P V L Q W I Q L S A E R G V L Y N  
3310 3320 3330 3340 3350 3360 3370 3380 3390 3400  
atcccctaattattaattaccggatctgaccgaccggtttgaattttgtagGAAGCGATCAGGGTCCGACTGGAACATCAACGCACACAGCATAGT  
E A I R L P H W N I N A H S I V  
3410 3420 3430 3440 3450 3460 3470 3480 3490 3500  
GTACGGGATCAGAGGACAAGCCAGAGTCCAGATCGTGAACGAGGAAGGAAATTCGGTGTTCGATGGAGTGCAGGAAGGACAGGTGGTGACGGGTGCCG  
Y A I R G Q A R V Q I V N E E G N S V F D G V L Q E G Q V V T V P  
3510 3520 3530 3540 3550 3560 3570 3580 3590 3600  
CAGAACTTCGGCGTGGTAAAGAGATCCAGAGCGAGAGGTTTGAGTGGTGGCGTTCAAGACCAACGACAAACCGGATGGTGAACCTCGTAGCCGGGAGGA  
Q N F A V V K R S Q S E R F E W V A F K T N D N A M V N S L A G R  
3610 3620 3630 3640 3650 3660 3670 3680 3690 3700  
CATCGGCAGTAAGGGCGATCCCGCGGATGTACTGGCTAACGCCTGGAGGTTGCCCGGAGGCGGAGGGTGAAGTTCAACAGGCAGGAGACTCA  
T S A V R A I P A D V L A N A W R V S P E A R R V K F N R Q E T H  
3710 3720 3730 3740 3750 3760 3770 3780 3790 3800  
CTTGGCTAGCACCCAGGGCCAGTCCAGGTCGCGCCGGAGGTTGAATGTCGTCAAGGAGGTGATCAACTTGCTTATGTAAaaatgtgacggtgaaataataa  
L A S T R G Q S R S P G R L N V V K E V I N L L M \*  
3810 3820 3830 3840 3850 3860 3870 3880 3890 3900  
cggtaaaatataatgtaataataataataaaagccacaaagtgagaatgaggggaagggaaatgtgtaatgagccagtagccggtggtgctaattttg  
3910 3920 3930 3940 3950 3960 3970 3980 3990 4000  
tatcgtattgtcaataaatcatgaattttgtggtttttatgtgttttttaaatcatgaatttttaaaattttataaaataatctccaatcgggaagaacaac  
4010 4020 4030 4040 4050 4060 4070 4080 4090 4100  
attccatatccatggatgtttttaccacaaatctagttcttgagaggatgaagcaccggaacagttctgcaactatccctcaaaagctttaaaatga  
4110 4120 4130 4140 4150 4160 4170 4180 4190 4200  
acaacaaggaaacagagcaactcccaaaagatcccaaacgaaacatatattctataactataataactataataactgcccgggaatcacaatccct

FIGURE 4-5

4210 4220 4230 4240 4250 4260 4270 4280 4290 4300  
gaatgattcctattaactacaagccttgttggcggcgagaagtgatcggcggcgagaagcagcggaactcggagacgaggcccttggatgagcagagtc  
4310 4320 4330 4340 4350 4360 4370 4380 4390 4400  
tttacctgccagggcgtgaaggggaagcggccttctggagtaggattcagcaagcggcggttcccttggcggagtaagcgggacgtaaggggtggnntgtc  
4410 4420 4430 4440 4450 4460 4470 4480 4490 4500  
gacgtcntcgtttcnggagggcnattcatgaagggttaaagtcanaatctgtagctctcgagtgtcagggagccnaaagacgttgggaaaccgtcgnctg  
4510 4520 4530 4540 4550 4560 4570 4580 4590 4600  
ttggggcatcagtcngcgggggacgccttccctcctgctgctccanaancnangtanatttaaaaganatgggaaattaantaatggghaatnannaggagg  
4610 4620 4630 4640 4650 4660 4670 4680 4690 4700  
attgnaacggtcnganccngnangaanagtttttahnnggttaataactgggggagtnagnagccnctggttccngttagangaaaccaaagnnccgg  
4710 4720 4730 4740 4750 4760 4770 4780 4790 4800  
gaggnttncannngnaggagaaaagganncatttnannangcngagggacatgaancgggtacngagctgngggttcannnancggcgnnggnagtcc  
4810 4820 4830 4840 4850 4860 4870 4880 4890 4900  
cnngggaccnggntggggtnanaaggggaanggaacattnggtngnangganaaanaccnttttaacnattgcctttgcaggnngntnngcncntncgggt  
4910 4920 4930 4940 4950 4960 4970 4980 4990  
nacatnccgctgcatgggctttggggngccnaganaggngnccncanggggnannccncttgtncangncgctnaagttcnattgtanattggnctgtg

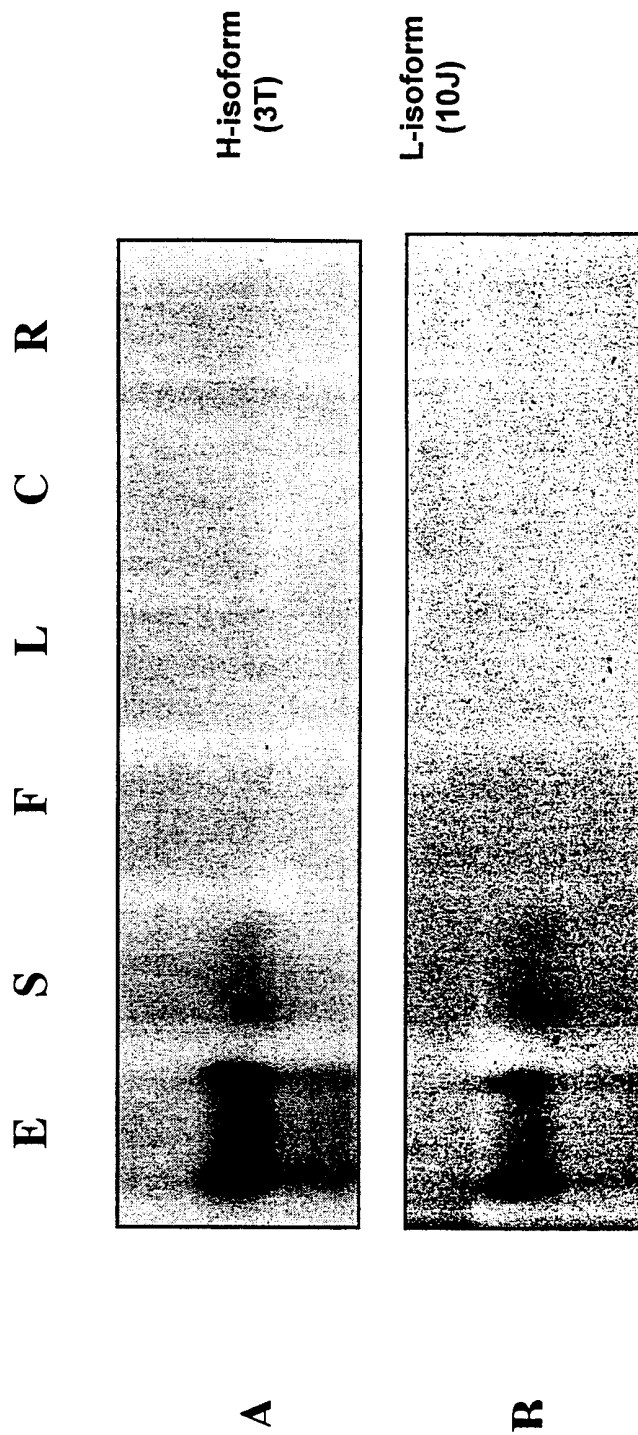
15/24

FIGURE 5



16/24

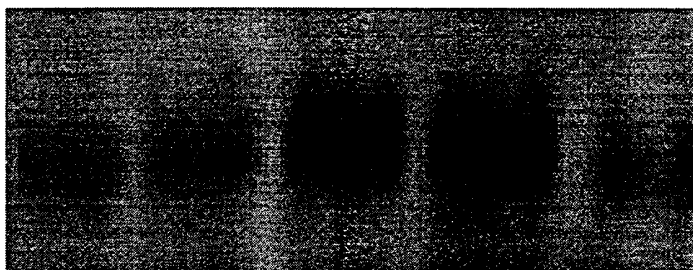
FIGURE 6



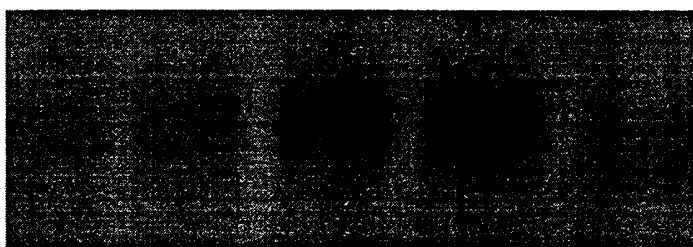
17/24

FIGURE 7

8 12 16 20 22

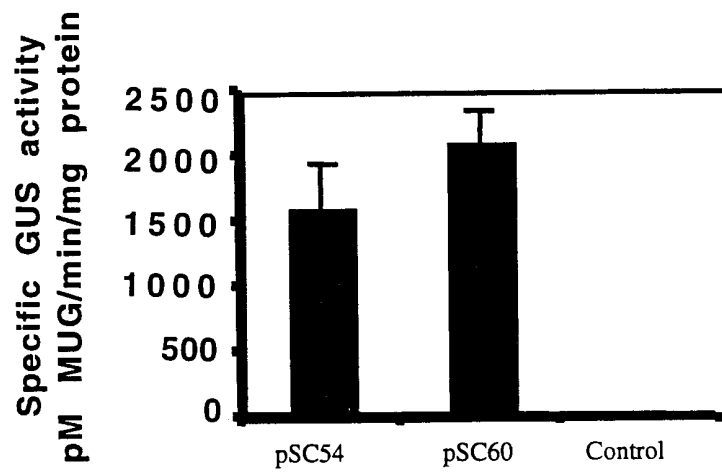


10J  
(L-isoform)



3T  
(H-isoform)

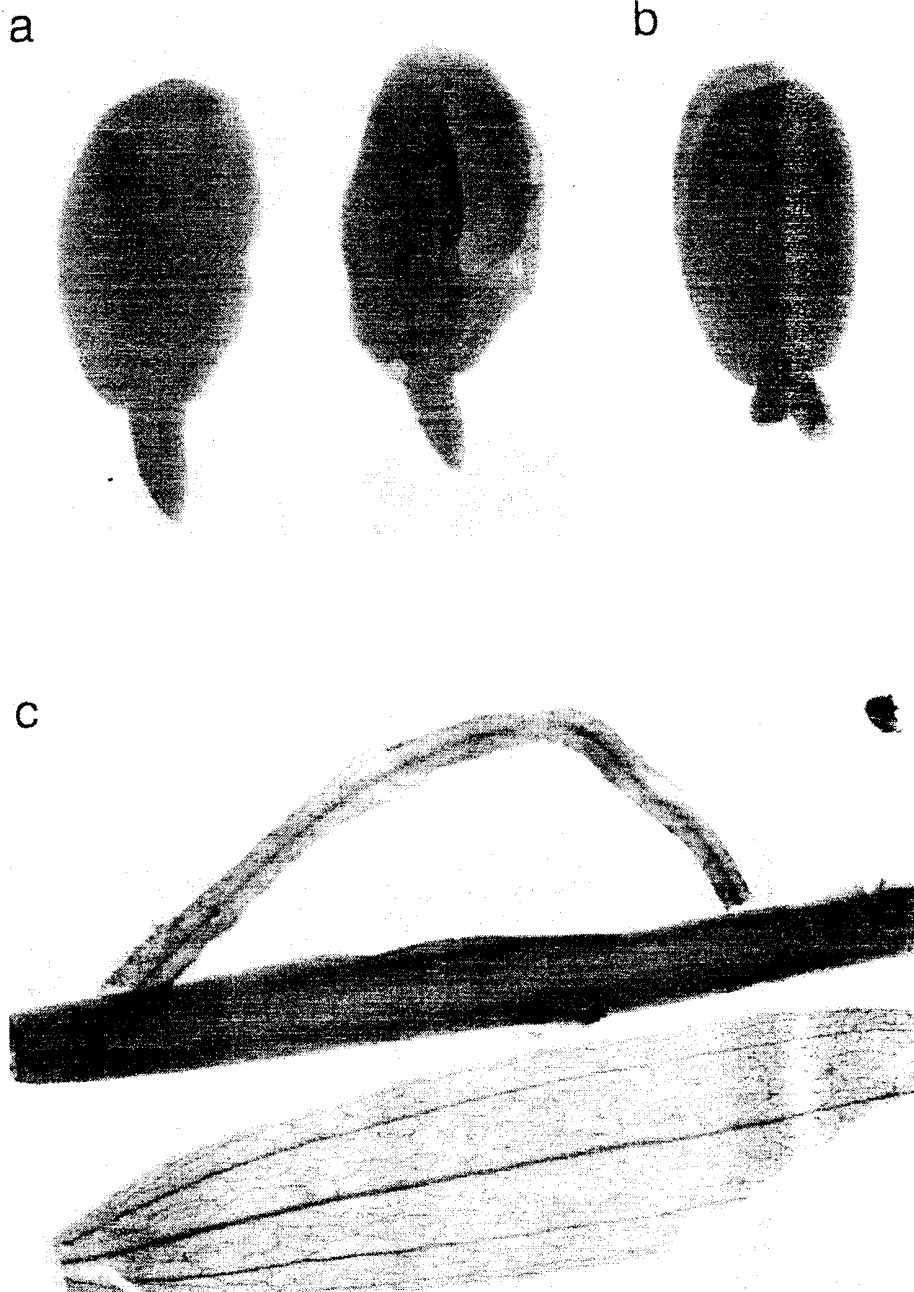
18/24  
FIGURE 8





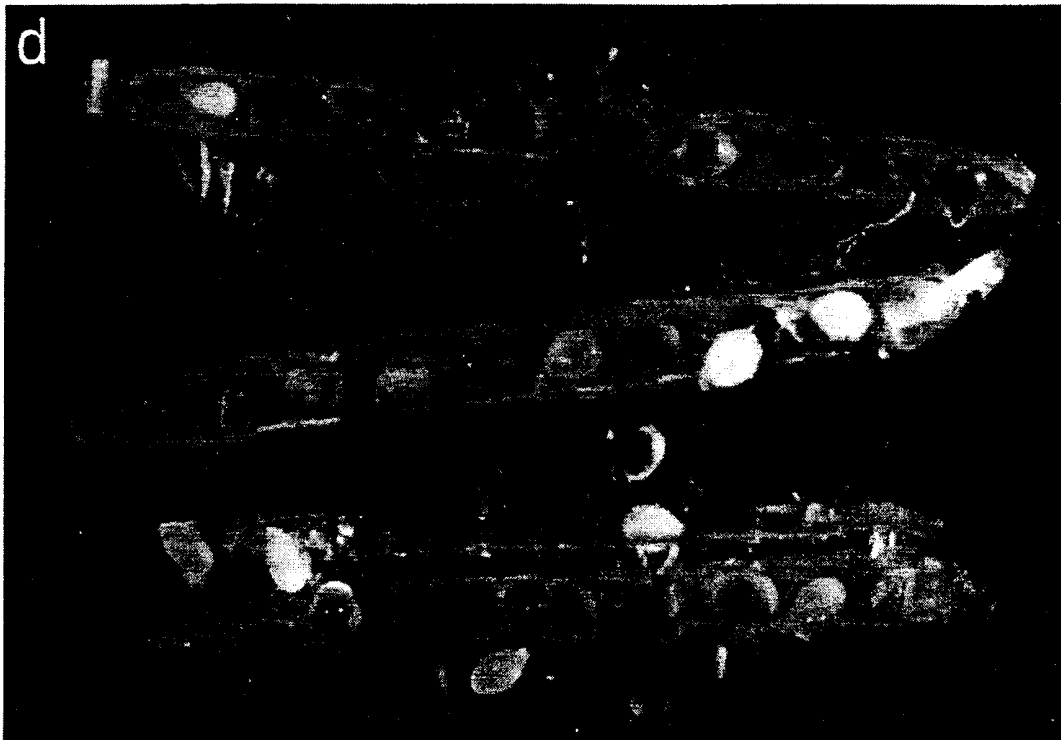
19/24

Figure 9.1



20/24

Figure 9.2



21/24

FIGURE 10

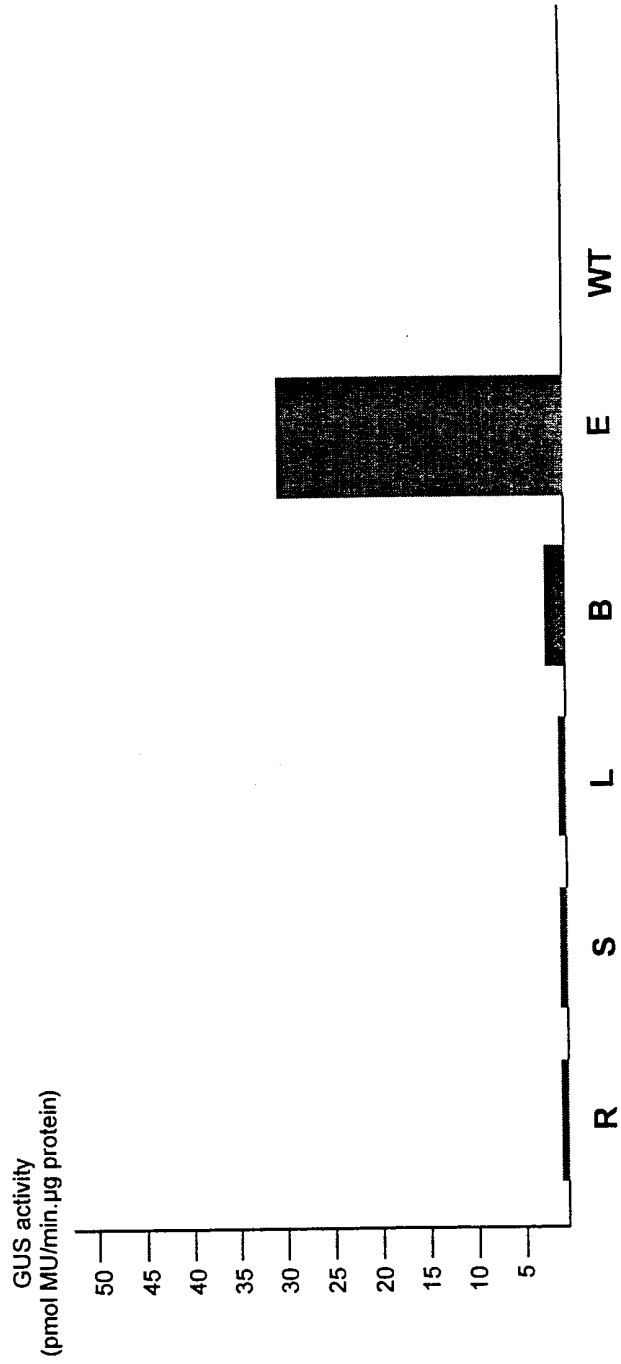
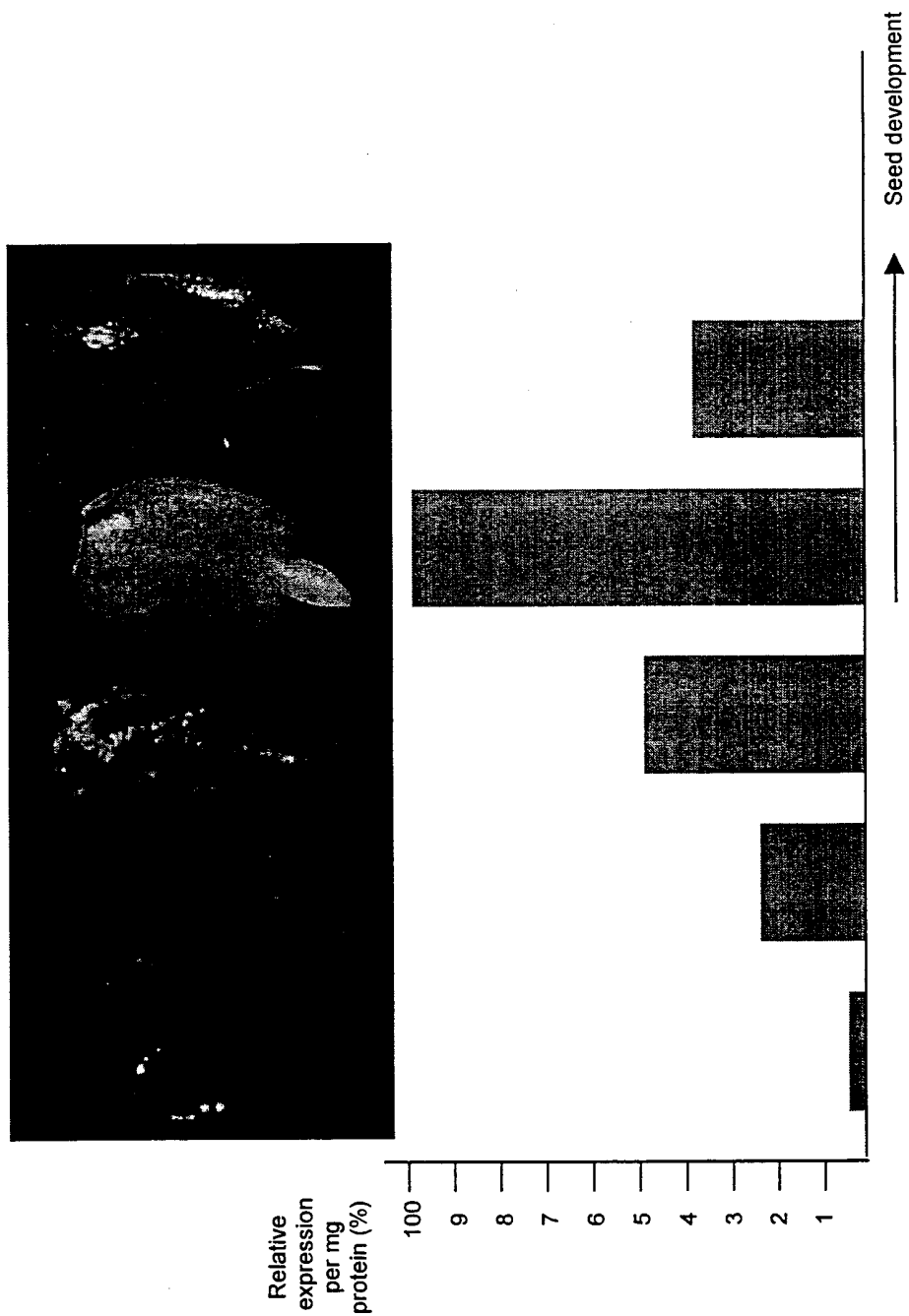
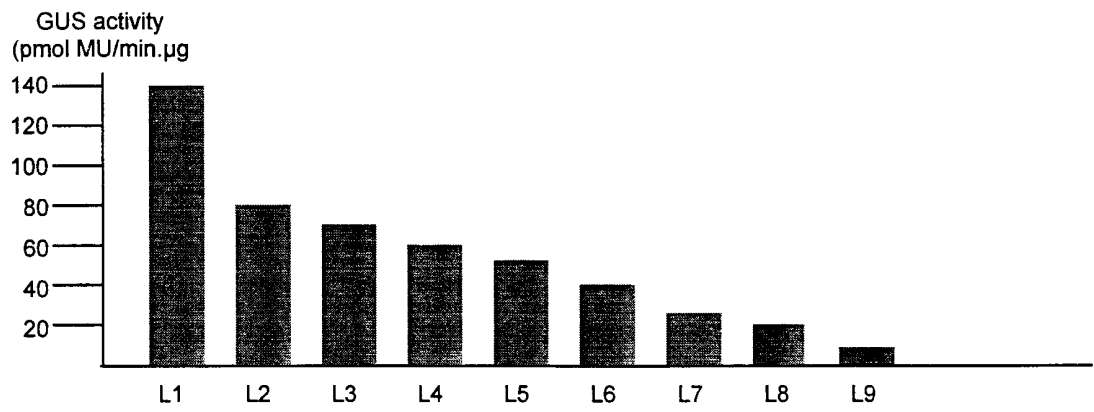


FIGURE 11



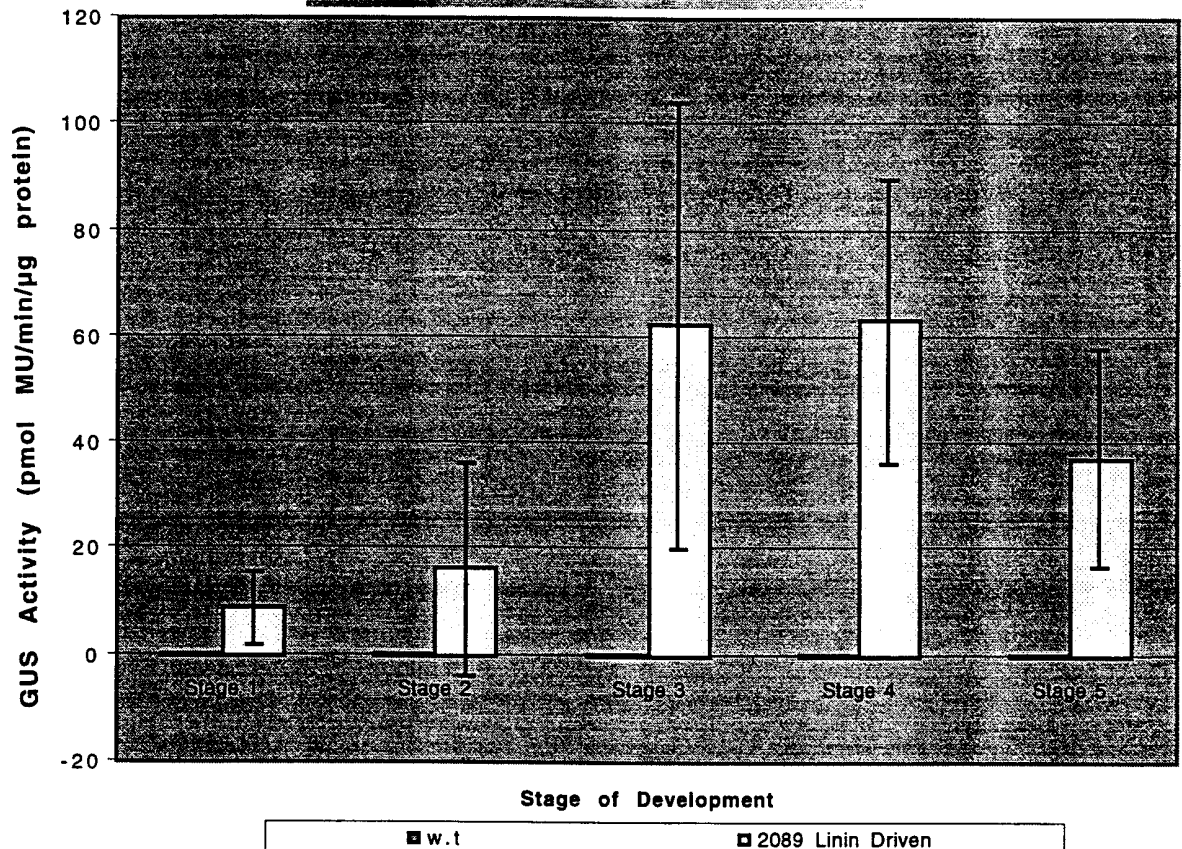
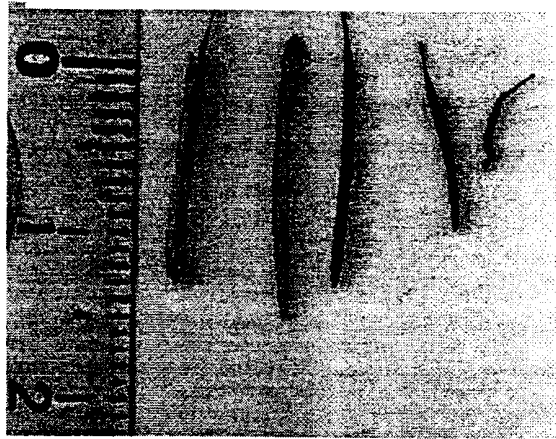
23/24

FIGURE 12



24/24

FIGURE 13



1/11

## SEQUENCE LISTING

<110> Chaudhary, Sarita  
 van Rooijen, Gijs  
 Moloney, Maurice  
 Singh, Surinder  
 SemBioSys Genetics Inc.  
 Commonwealth Scientific and Industrial Research Organisation

<120> Flax Seed Specific Promoters

<130> 9369-147

<140>

<141>

<150> 60/151044

<151> 1999-08-27

<150> 60/161,722

<151> 1999-10-27

<160> 25

<170> PatentIn Ver. 2.0

<210> 1

<211> 4305

<212> DNA

<213> Linum usitatissimum

<400> 1

```

ttcaaaaccc gattcccgag gcggccctat tgaagatat ggggaagttc gacgagatcg 60
atgtcggggtc gagtgctatg gtgatgggtgc cgtttggggg gaggatgagc gagatagcca 120
agactagcat tccgttccca cacagagttg ggaatttgta ccaaacccaa cacttgctcg 180
attggagcga cgatagggac gcggaaaaac acatccgttg gatcagggag ttgtacgatg 240
atctcgagcc ttatgtgtcg aagaatccga ggtatgctta cgtgaactac agggatctcg 300
acatcgggat gaatggagga ggtgaagggg atgagaaggg tacttatggt gaggctaagg 360
tgtgggggga gaagtacttt ggggtcaact ttgatcgggt ggttcgggtg aagacgattg 420
ttgatcccaa taatgtgttt cgaaacgagc agagcattcc ctcaattcca actcggttat 480
aaggatcaat gatcaatgag aattttcctt tccaatgtga ttacaagttc tattgggtca 540
gctttctcaa ctgctcctat tcatttagat taattcataa caactattaa tttaccagcc 600
ttttatcccg cccggtggcc gatttatttt cttaagtttt agatgaaatg aaaccgattt 660
agtttttatt gagatgagat taatcttaat ttgcttgaaa tttactcacg gttgatgtga 720
tatttggaaat taactaaaat gataaatatc ggataaaaat aaaaatattt aaaataaata 780
acataaacat aagaacaata aaataaataa atttaatttt aatttatttc cttgttttct 840
ttctgtatca tacatctctt ctcttacttc ttaaaggcct ttcaattatc acttaattaa 900
atacaataga taaatcgтта attctataac attaacctat acaacttgac ggtgaacaat 960
caatatgata atataataat aatataataa ttcaattatt aatctacaat tttttaatta 1020
taaagtttat gcggtcagtt tctgcaagct ccgagctcct tgtcatcggt agtttctgcg 1080
gtctcaaggt ataacgactc ggagcgacga gccctttgct tccaatggac gggttgcatt 1140
tctgccgctc ttgagctcga ttggcgtgtc atgctggagt cagagttcct acaaaaaaac 1200
cctaaactag aggggtgatta gggtgaaatt aggggtgttg cctgggttcc attgtccaaa 1260
gttttagtca acttaaaaac agacttaaat tttatgcttc aaaaatagttt atctgttatt 1320
atattagcgt gtaattagtc ttgacaatgg ggccggacgg gtacggattc gggacccccga 1380
tccccgcca tagtgtaatg gctcaactgc caagtcagca ttggaccgaa attattggac 1440
acgaagtact aatgtgaaaa actttacatt tgttattttc tactttaata ctatgctatt 1500
ttcaaaattt gaactttaat actatgtttt tatatagttt agtatatctt aatttttatg 1560
caaattcatc taattgtatt aaactatttt cgatccgtag ctaattattt cgaaggcaag 1620
tcaaagtgtt atgtggact atgtgagcta atattgaacc tttatctctc ccaaccactc 1680
aagttaattg aaccaaaact gatcggttgg gtttcgagct atttcgagcc attgttgтта 1740
tatgcacgtg agatatcaag attgaccgga acactttatt atgataatgt agaaaaagaa 1800
aacatattct aagactacat gcatgcaaag tgcaaccctc gcatggaaag ctgctcaaca 1860
cgtggcatag actcccgcga cgtgtccatt ccacctcatc acctcaccct caccgttcac 1920

```

```

ctcttattat atcacaacaa tcaatcaatc ctactcctcc atactcgaac aaatccgacc 1980
aacttatacc aatattccca aacttgatta atttctcagc aatatggatc agacgcacca 2040
gacatacgcc ggaaccacgc agaaccocgag ctatggcggc gggggcacia tgtaccagca 2100
gcagcagccg aggtcttacc aggcggtgaa ggcggccact gcagccaccg cgggtggatc 2160
cctcatcgtt ctgtccggtc tcatccttac ggccaccgtc atttcaactca tcatagccac 2220
ccctctcctt gtcacttca gccctgttct tgtcccggtc tcatcaccg tcgggtctct 2280
gatcaccggg tttcttgctt ccggtgggtt cggagtcgcc gccgtcaccg tcttgcctg 2340
gatctatagg tatgtataag ctttggactt tagtattggt ataaaataca taagctgatt 2400
tatgaacatg gatctcccaa caagagttat ttaaatgcat tctcggctctg actcgatcgg 2460
ttgggttttg agtactcgg tcacaatggt cgggtcggct ctggatctgt tatactaata 2520
tttggaaagg tgaagtttca ttgttctgcc ccaacttccc actacctttt gaggtggtta 2580
agaagccata caaactaatt atgaatccct cccaacaact cagaactcga gtcagtgggt 2640
tgtgacgggt ctctataaac atttcgaaaa tctttgttca atgaacgtag aaatgaccat 2700
gcttgatgat tgtgggtctt ataaggtagc tgaccggcgg gcaccocggc ggaggggatt 2760
cgctggacca ggctaggtcg aagctggccg gaaagccag ggaggtgaag gacagggcgt 2820
cggagttcgc acagcagcat gtcacaggtg gtcacacagac ctcttaaaga gactcctcta 2880
gttaaattgg tcttcgtttc tgtttcgtgg cggcttgtaa actctctttt aagtgtgctg 2940
ttttcctttt gtctcgtgtg ttgtaagtga aagtgtaatc gaagttccaa gttggagatg 3000
tttgtaacga tgatgttttc taataatcag agatattaaa agggttgcta atttagtatt 3060
gcgtctgatc tcggaccaa ctcgcaagta aaattgcaga ggatgagttg tacagaacaa 3120
gcgtgcattg ttctggaagt tcatctcctt ggagccgacc ttgttgcttg cagtttcgcc 3180
aagtccacta gacaatgtta cgagttaagc ctctgtcaaa cagatcgctc tagcgtcca 3240
gaaaacacca gatttttoga aaaccatcgg ggatcaattt tcgattcaat tccgatcttg 3300
gaagtacttg aacagaagca tgatgctaaa agataataga aaatcgaagc ctagaaaagt 3360
tgtacagaaa gcaacaagtc aaaaatatag atcaacttca aaggttcaaa ttacatctta 3420
cagaccccaa aaaatgacag ttaacagaagc tcgactaaac agaaaccagc cagcttcacc 3480
tggaatgaag gagctttag caatccatcc tagcttcatt cccctttgaa attgcagaca 3540
gagctctcat ctgctaaag ctggtggctt attcttaacc ctgcaatcaa taagcatgaa 3600
ctaacattgg acaccttcat cggcggattg ctgaaaaatc agtgagcgag ggatttacct 3660
gtgtgtgtag taacctctct ccttgtagat aaaatctgga aattccggca tcaactactg 3720
ccacctttct gcttaagggtg attttatcac caaggctgag cgtgattcct tgcgtcttgc 3780
tccgaatcct gatgtatcca ctgagctttc catctccttc cttctccagg cttatgttca 3840
ccaatgcgtc ctgcgcaac acactcttgg cgtacaagtt cgcagccagg aatccacact 3900
ctccatcaag tgcagacctg caaaccccaa ataagaacac aaactccaaa gtcaacgatc 3960
aattctccgc cttttatgaa gaaaaggaaa cttctgggta cttacgggtg cgtcagacac 4020
ttcatatttg tagacttgat gatatggtcc aggaattcct tctcgttctg aattgttgtg 4080
ttaacagcaa cctgacagac agaaagatat cgcaaattta agatactggg atgactaggg 4140
acagagaaat gaaatctaat tctagaagta aaaccttatt ttcccattca aattctgccc 4200
acatagtcgg gaacgcagca tccgagcaag aagcaggaga gatgtaatcc atgatatcga 4260
tgtggatata gttgaggacg acaactgaac gttccatcac attggg 4305

```

```

<210> 2
<211> 109
<212> PRT
<213> Linum usitatissimum

```

```

<400> 2
Met Asp Gln Thr His Gln Thr Tyr Ala Gly Thr Thr Gln Asn Pro Ser
 1                5                10                15

Tyr Gly Gly Gly Gly Thr Met Tyr Gln Gln Gln Gln Pro Arg Ser Tyr
      20                25                30

Gln Ala Val Lys Ala Ala Thr Ala Thr Ala Gly Gly Ser Leu Ile
      35                40                45

Val Leu Ser Gly Leu Ile Leu Thr Ala Thr Val Ile Ser Leu Ile Ile
      50                55                60

Ala Thr Pro Leu Leu Val Ile Phe Ser Pro Val Leu Val Pro Ala Leu
      65                70                75                80

Ile Thr Val Gly Leu Leu Ile Thr Gly Phe Leu Ala Ser Gly Gly Phe
      85                90                95

```



Gly Val Ala Ala Val Thr Val Leu Ser Trp Ile Tyr Arg  
100 105

<210> 3  
<211> 46  
<212> PRT  
<213> Linum usitatissimum

<400> 3  
Tyr Val Thr Gly Gly His Pro Ala Gly Gly Asp Ser Leu Asp Gln Ala  
1 5 10 15  
Arg Ser Lys Leu Ala Gly Lys Ala Arg Glu Val Lys Asp Arg Ala Ser  
20 25 30  
Glu Phe Ala Gln Gln His Val Thr Gly Gly Gln Gln Thr Ser  
35 40 45

<210> 4  
<211> 3501  
<212> DNA  
<213> Linum usitatissimum

<400> 4  
tctagacatt tgacataaac cgaattcaaa gaacacaaca ttgactaaca ccaaaaagaa 60  
atagagtagt gaaatattgga agattaaaaa atagaaaaca actgattcctt agaaagaaga 120  
gatgattagg tgctttcagt tcggctctgtc aggaaatcga gatgttcaact tatttacatt 180  
gtcgaattcat ctcccaattg tcctgggtcc ttactgtcc gacgcttttt tgaatcccag 240  
ttaattccca tcaagtcttc cttagctgc gtgactctgc tagctccaac atggagcgtg 300  
gagctactc gttcatgggg catcgcaaag gtttgcttc atgttctgct accagccagc 360  
gccaccgcc tcttggttgt gtggacaatt gcggtgaagc gcgcaagttg acatcccata 420  
gtctcgacac ttcaccatat ggatgtttaa aacgtatata acgagtgcga tctacatgct 480  
ccatcacacc acatataaag caatagtttg ggagcttttc atatttgaag cgggcattga 540  
cgacttgccc tctcgataat ttaatctttt tttctcttca gctgattgtg tgcattccatt 600  
cgggctcaga agcacatcaa agggatctct ccctcgtagt attgggtcgt gtcgtatgat 660  
acgaagcagt cgatgaagtt tctaagtgt cgagctacag gctccgcaa gaaccgcgca 720  
ggtagatcgt atgctagtac ccaaaaatca gtttgcgta gcggaatcaa cactagagac 780  
tcaccctaag gcatctcatg tgtgatgaac agtttatcat ttgtgagtct aggggtcatt 840  
gtcgaatgacc caatgcacat tgagcttatg atagaatttg aataggaagc gttttccacc 900  
cagatcacga atagctaccc ctttttcggg cgccaaattt ccggcatcct atcttccacc 960  
acaacttaaa gatgcatcg gtaaggaact caccgaccac acacatcgaa taatcttcgg 1020  
tgaccgggttc ctggtgatca agtccctcaa tttctcaac ctagtcttca atcgcgcgta 1080  
gcgttatccc cggcatatgg actttcatag cgcggagcgt agccggagac gacgagcaag 1140  
aaggatgagc ggcggcagat tgcggctaaa gaaacgagct tcctgccttg ctctatggag 1200  
gcagatttct gagttgatgg tgatggattt gtgatgtgga cacttttaat ttaagttgat 1260  
tttttagcac ttcattcacg taattaaata aataatttcc agtattttat atttatttcc 1320  
ttacgttatc taattttttg aaagattaaa actttgatat aggcaagatc atgacacgct 1380  
gaagttaagt gaatgagact cctaacaagg taataacaaa gcagttcata aaccgaatga 1440  
ccttgatcct tactaagctt gagatcattg aacatataat taaatacgtt aatgaaagat 1500  
aagaacttta atataaaaaat cattcaaaac gagaaactga taacaaaaac aaagcaaacg 1560  
gccaacaaaa taatagacgg tggaaggatg atgcagagcc atccaccctt ttttcccagt 1620  
ttccttactg cttacttctc tatgcatatc acaagacgcc cttgaaactt gttagtcatg 1680  
cagagccctt actcgcaggg tcaccgcacc acgtgttact ctatcacttc tctcctcttt 1740  
cctttaaaga accaccacgc cacctccctc tcacaaacac tcataaaaaa accacctctt 1800  
gcattttctc caagttcaaa ttagttcaca gctaagcaag aactcaacaa caatggcgga 1860  
tcgtacaaca cagccacacc aagtccaggt ccacaccag caccactatc ccaccggcgg 1920  
ggctttcggc cgttatgaag gtggactcaa agcgggtcca catcaccagc aaggatcagg 1980  
cagcggccca tcagcttcca aggtgttagc agtcatgacc gcgctcccca tcggcgggac 2040  
cctccttgcc ttggccggga taacctggc tggcagatg atcgggctgg cgatcaccac 2100  
cccgattttt gtcactgca gccctgttct agtcccgcc gctctgctca tcgggtttgc 2160  
cgtgagcgcg tttctggcct cggggatggc cgggctgaca gggctgacct cgctgtcgtg 2220  
gtttgcgagg tatctgcagc aggtgggca gggagttgga gtgggggtgc cggatagttt 2280  
cgagcaggcg aagagggcga tgcaggatgc tgctgggtat atggggcaga agaccaagga 2340

```

agttgggcag gagatccaga ggaagtctca ggatgtgaaa gcatcagaca aataaggtga 2400
taataagggg ttttgggttc gtgtgtaaac tggtaaaatg gaaattctgg gttttactgt 2460
acttttgcag gtagtggaat gaatgagttc ttgttctctt ttgtctttta atcataaagt 2520
aagaagcagc atttcatggt ctggttgaat attgtcaaga attcgcaaca aatntagcta 2580
aaccagtcca atcttaccgg ttagacgact tcccagtaag aaacattcca ggtccatccc 2640
ggtataagag tctggacttc tgaaaccttt agaccttggg tttggaaaaa agatgaaacc 2700
tttagaataa attacaacga tggcagattg taaaaaactg gagtcgagat catgtaaatt 2760
agcccataac taagaaccgg cgatgacaac aattactagg aatatggttg ttgggctggt 2820
cggcggctag cggtgatgat ttggaagaat cggggatcca gaatgtgaga accgaatcat 2880
cgacgaacat taccggcgca ggagcccatt tcaagcaact ttggaactcc tatatggctg 2940
ttccagcagg ccacctgctc aagaagaaa gaagccatgt cagaaatcct tacgaaatct 3000
aactggatgc tgatatgaat ccgccaggtg tgcggagttc tttacaggca ggatctataa 3060
agaagaaaca tgttttgtat tggcattggt gatgttccaa gcacgcagcg atctatctcc 3120
ggatcctaac aacaaaaata cggattctgt aagaaacaag cgcagaaaac ttctgcaacg 3180
aaaccactcg tatatttggg tctgagttgg agaaagatga ccatactact gtatttgggt 3240
gaacttggat tggaaaccgaa attttgagtt gaaaagcgag tgatcgtata taaatttcag 3300
attcagatta ggatatccta tgagagaagg tagagttacc tgatactaca tactgcccc 3360
caggggtaaa agttgcctcg atggttgtgt ttggagatgg ttccaggcta aatccacaac 3420
gctgaacaaa ttaaagatg aatggatcaa tcttcaacc ttacttctgc atttatgagg 3480
attggctcaa ggctctctag a 3501

```

<210> 5

<211> 180

<212> PRT

<213> Linum usitatissimum

<400> 5

```

Met Ala Asp Arg Thr Thr Gln Pro His Gln Val Gln Val His Thr Gln
 1                               5                               10                               15

His His Tyr Pro Thr Gly Gly Ala Phe Gly Arg Tyr Glu Gly Gly Leu
 20                               25                               30

Lys Gly Gly Pro His His Gln Gln Gly Ser Gly Ser Gly Pro Ser Ala
 35                               40                               45

Ser Lys Val Leu Ala Val Met Thr Ala Leu Pro Ile Gly Gly Thr Leu
 50                               55                               60

Leu Ala Leu Ala Gly Ile Thr Leu Ala Gly Thr Met Ile Gly Leu Ala
 65                               70                               75                               80

Ile Thr Thr Pro Ile Phe Val Ile Cys Ser Pro Val Leu Val Pro Ala
 85                               90                               95

Ala Leu Leu Ile Gly Phe Ala Val Ser Ala Phe Leu Ala Ser Gly Met
 100                              105                              110

Ala Gly Leu Thr Gly Leu Thr Ser Leu Ser Trp Phe Ala Arg Tyr Leu
 115                              120                              125

Gln Gln Ala Gly Gln Gly Val Gly Val Gly Val Pro Asp Ser Phe Glu
 130                              135                              140

Gln Ala Lys Arg Arg Met Gln Asp Ala Ala Gly Tyr Met Gly Gln Lys
 145                              150                              155                              160

Thr Lys Glu Val Gly Gln Glu Ile Gln Arg Lys Ser Gln Asp Val Lys
 165                              170                              175

Ala Ser Asp Lys
 180

```

<210> 6

<211> 1676  
 <212> DNA  
 <213> Linum usitatissimum

<400> 6  
 tccactatgt aggtcatatc catcatttta atttttgggc accattcaat tccatcttgc 60  
 ctttaggggat gtgaatatga acggccaagg taagagaata aaaataatcc aaattaaagc 120  
 aagagaggcc aagtaagata atccaaatgt acacttgta tgcgccgaaat tagtaaaata 180  
 cgcgccatat tgtattccca cacattatta aaataccgta tatgtattgg ctgcatttgc 240  
 atgaataata ctacgtgtaa gcccaaaaga acccacgtgt agcccatgca aagttaacac 300  
 tcacgacccc attcctcagt ctccactata taaaccacc atccccaatc ttaccaaac 360  
 caccacacga ctcaacaact gactctcaca ccttaaagaa ccaatcacca ccaaaaaatg 420  
 gcaaagctga tgagcctagc agccgtagca acgcagttcc tcttctctgat cgtgggtggac 480  
 gcatccgtcc gaaccacagt gattatcgac gaggagacca accaaggccg cgggtggaggc 540  
 aagtgggcag ggacagcagc agtctgagc cagcagatcc agcagcgaga cttcctgagg 600  
 agctgccagc agttcatgtg ggagaaagtc cagagggcg gccacagcca ctattacaac 660  
 cagggccgtg gaggaggcga acagagccag tacttcgaac agctgtttgt gacgacctta 720  
 agcaattgag caccgagggtg caccatgccca ggggacttga agcgtgccat cggccaaatg 780  
 aggcaggaaa tccagcagca gggacagcag cagggacagc agcaggaagt tcagaggtgg 840  
 atccagcaag ctaaacaat cgctaaggac ctccccggac agtgccgcac ccagcctagc 900  
 caatgccagt tccagggcca gcagcaatct gcatggtttt gaaggggtga tccgattatga 960  
 gatcgtaaaa agacactgct aggtgttaag gatggataat aataataata atgagatgaa 1020  
 tgtgttttaa gttagtgtaa cagctgtaat aaagagagag agagagagag agagagagag 1080  
 agagagagag agagagagag agaggctgat gaaatgttat gtatgtttct tggtttttaa 1140  
 aataaatgaa agcacatgct cgtgtgggtc tatcgaatta ttcggcgggt cctgtgggaa 1200  
 aaagtccaga agggcggccg cagctactac tacaaccaag gccgtggagg agggcaacag 1260  
 agccagcact tcgatagctg ctgcatgat cttaaagcaat tgaggagcga gtgcacatgc 1320  
 aggggactgg agcgtgcaat cggccagatg aggcaggaca tccagcagca gggacagcag 1380  
 caggaagttg agaggtggtc ccatcaatct aaacaagtcg ctagggacct tccgggacag 1440  
 tgccggcacc agcctagccg atgccagctc caggggcagc agcagtctgc atggttttga 1500  
 agtggtgatc gatgagatcg tataaagaca ctgctaggtg ttaaggatgg gataataaga 1560  
 tgtgttttaa gtcattaacc gtaataaaaa gagagagagg ctgatggaat gttatgtatg 1620  
 tatgtttctt ggttttttaa attaaatgga aagcacatgc tcgtgtgggt tctatc 1676

<210> 7  
 <211> 174  
 <212> PRT  
 <213> Linum usitatissimum

<400> 7  
 Met Ala Lys Leu Met Ser Leu Ala Ala Val Ala Thr Gln Phe Leu Phe  
 1 5 10 15  
 Leu Ile Val Val Asp Ala Ser Val Arg Thr Thr Val Ile Ile Asp Glu  
 20 25 30  
 Glu Thr Asn Gln Gly Arg Gly Gly Gly Lys Val Ala Gly Thr Ala Ala  
 35 40 45  
 Val Cys Glu Gln Gln Ile Gln Gln Arg Asp Phe Leu Arg Ser Cys Gln  
 50 55 60  
 Gln Phe Met Trp Glu Lys Val Gln Arg Gly Gly His Ser His Tyr Tyr  
 65 70 75 80  
 Asn Gln Gly Arg Gly Gly Gly Glu Gln Ser Gln Tyr Phe Glu Gln Leu  
 85 90 95  
 Phe Val Thr Thr Leu Ser Asn Cys Ala Pro Arg Cys Thr Met Pro Gly  
 100 105 110  
 Asp Leu Lys Arg Ala Ile Gly Gln Met Arg Gln Glu Ile Gln Gln Gln  
 115 120 125  
 Gly Gln Gln Gln Gly Gln Gln Gln Glu Val Gln Arg Trp Ile Gln Gln

130		135		140
Ala Lys Gln Ile Ala Lys Asp Leu Pro Gly Gln Cys Arg Thr Gln Pro				
145		150		155
Ser Gln Cys Gln Phe Gln Gly Gln Gln Gln Ser Ala Trp Phe				
	165		170	

<210> 8  
 <211> 4999  
 <212> DNA  
 <213> Linum usitatissimum

<400> 8  
 ctcaagcata cggacaaggg taaataacat agtcaccaga acataataaa caaaaagtgc 60  
 agaagcaaga taaaaaaatt agctatggac attcaggttc atattggaaa catcattatc 120  
 ctagtcttgt gaccatcctt cctcctgctc tagttgagag gccttgggac taacgagagg 180  
 tcagttggga tagcagatcc ttatcctgga ctageccttc tgggtgttca gagtcttcgt 240  
 gccgccgtct acatctatct ccattaggtc tgaagatgac tcttcacacc aacgacgttt 300  
 aaggtctcta taacgtctcg agcttgcaat acctggcttg caataacctg agcatcgtgc 360  
 acgatgattg gatactgtgg aggaggagt tttgctgatt tagagctccc gggtgggtga 420  
 tttgacttgc atttcagttt aggcttgttg aaatttttca ggttccattg tgaagccttt 480  
 agagcttgag cttccttcca tgtaaatgcc ttgatcgaat tctcctagag aaaagggag 540  
 tcgatctctg agtattgaaa tcgaagtgca catttttttt caacgtgtcc aatcaatcca 600  
 caaacaagc agaagacagg taatctttca tacttatact gacaagtaat agtcttaccg 660  
 tcatgcataa taacgtctcg ttccttcaag aggggttttc cgacatccat aacgaccga 720  
 agcctcatga aagcattagg gaagaacttt tggttcttct tgtcatggcc tttataggtg 780  
 tcagccgagc tcgccaatcc ccgtccgact ggctccgcaa aatattcgaa cggcaagtta 840  
 tggacttgca accataactc cacggtattg agcaggacct atgtggaaga ctcatctcat 900  
 ggagcttcag aatgtgggtg tcagcaaacc aatgaccgaa atccatcaca tgacggagct 960  
 ccagtggttg agcgaaacga aacaggaagc gccatcttt cagagtcgtg agtcccacac 1020  
 cggattccgg caactacgtg ttgggcaggc ttgcgccgat tagagatatg ttgaggcaag 1080  
 acccatctgt gccactcgta caattacgag agttgttttt tttgtgattt tcttaagttt 1140  
 ctggttgatg gtgagctcat attctacatc gtatgggtct tcaacgtcgt tctctgtcat 1200  
 ctgatatccc gtcatttgca tccacgtgcg ccgctcccgc tgccaagtcc ctaggtgtca 1260  
 tgcacgccaa attggtgggtg gtgcgggctg cctgtgtgct cttaccgatg ggtggagggt 1320  
 ggtttggggg gtcctccgcg cgatggtagg ggggtgacgg tttggtgtgg gttgacggca 1380  
 ttgatcaatt tacttcttgc ttcaaattct ttggcagaaa acaattcatt agattagaac 1440  
 tggaaaccag agtgatgaga cggattaagt cagattccaa cagagttaca tctcttaaga 1500  
 aataatgtaa cccctttaga ctttatatat ttgcaattaa aaaaataatt taacttttag 1560  
 actttatata tagttttaat aactaagttt aaccactcta ttatttatat cgaaactatt 1620  
 tgtatgtctc cctctaataa aaacttggta ttgtgtttac agaactata atcaataat 1680  
 caatactcaa ctgaagtttg tgcagttaat tgaaggatt aacggcmeta atgcactagt 1740  
 attatcaacc gaatagattc acactagatg gccatttcca tcaatatcat cgccgttctt 1800  
 cttctgtcca catatcccct ctgaaacttg agagacacct gcacttcatt gtccttatta 1860  
 cgtgttacia aatgaaacc atgcatccat gcaaactgaa gaatggcgca agaacccttc 1920  
 ccctccattt cttatgtggc gaccatccat ttcaccatct cccgctataa aacaccccca 1980  
 tcaactcacc tagaacatca tcaactattg cttatccatc caaaagatac ccaccatggc 2040  
 tagatcatca agccctttgc ttctctcact ctgcattttc gccattctct tccactcttc 2100  
 tctgggtagg cagcaattcc agcaggggaa cgagtgccag atcgacagga tcgacgcac 2160  
 cgagccggac aaaaccatcc aggcagaagc tggcaccatc gaggtatggg accagaaccg 2220  
 ccagcaattc cagtgcgctg gtgttgccgt tgtaaggcgc accattgagc ccaaagggtc 2280  
 tctcttgctt ttctacagca acaccctcta gctcatctac atcgttcaag gtataaatta 2340  
 aatcagttca tacaatgata accaccattc cgaatgtatt tatcaaatat caatgatcga 2400  
 tgcacctgta tgtgttgtgt atattcaggt aggggagtta caggaatcat gttcccakga 2460  
 tgtccagaga cattogagga atcccagcag caaggacaac agggccaaca gggtagttcc 2520  
 caagaccagc accagaagat ccgccccttc cgtgaagggt acgtcattgc cgtccctgcc 2580  
 ggtgtagccc actggctccta caacgatggc aacgaaccag tcatggccat tgttgtccat 2640  
 gacacttcca gccacctcaa ccaactggac aacaacccca gggatatata gcattgccgt 2700  
 agttgctaat aaattgcaca caattggaac tctattttca gtatctaata actttttcct 2760  
 tttttggcag aacttctact tggcagggaaa cccgagagac gagttcgaac aatcgcagca 2820  
 aggaggcagg ctgagccgtg gggagagtga aggtggacga ggacgcaggg aacctcttca 2880  
 acctgcaaca acctcttctt gcggaatcga ctccaagctc atcgcggagg cgttcaatgt 2940  
 cgacgagaac gtggcaagga ggctacagag cgagaacgac aacagaggcc agatcgtccc 3000

```

agtcgaaggc gagctcgaca tcgtcagacc tccgaccagt atccaggagg agtcacagga 3060
gcagggaggt cgtgggtggtg gccgctacta ctccaatgga gtggaggaga ctttctgctc 3120
catgagacta attgagaaca tcggcgatcc ttctcgggca gacattttca ctccagaagc 3180
cggccgcggt agatccctca acagccacaa cctccccgtc ctgcaatgga tccagcttag 3240
cgccgagaga ggcggttctct acaatgtata gatctcactc acgcaccaac tctaaattga 3300
atccctaatt atttaattca ccgatatctg accgaccggt ttgaattttg taggaagcga 3360
tcaggctgcc gcactggaac atcaacgcac acagcatagt gtacgcgatc agaggacaag 3420
ccagagtcca gatcgtgaac gaggaaggga attcgggtgt cgatggagtg ctgcaggaag 3480
gacaggtggt gacggtgccg cagaacttcg cggtggtaaa gagatcccag agcgagaggt 3540
ttgagtgggt ggcggtcaag accaacgaca acgcgatggt gaactcgcta gccgggagga 3600
catcggcagt aagggcgatc cccgcggatg tactggctaa cgctggagg gtgtcgccgg 3660
aggaggcgag gagggtgaag ttcaacaggc aggagactca cttggctagc accaggggcc 3720
agtccaggtc gcccgggagg ttgaaatgctg tcaaggagg gatcaacttg cttatgtaaa 3780
atgtgacggt gaaataataa cggtaaaata tatgtaataa taataataat aaagccacaa 3840
agtgagaatg aggggaagg gaaatgtgta atgagccagt agccgggtgt gctaattttg 3900
tatcgtattg tcaataaatc atgaattttg tggtttttat gtgttttttt aaatcatgaa 3960
ttttaaattt tataaaataa tctccaatcg gaagaacaac attccatata catggatggt 4020
tctttaccca aatctagttc ttgagaggat gaagcatcac cgaacagttc tgcaactatc 4080
cctcaaaagc tttaaaatga acaacaagga acagagcaac gttccaaaga tcccaaacga 4140
aacatattat ctataactat actatattat taattactac tgcccggaat cacaatccct 4200
gaatgattcc tattaactac aagccttgtt ggcggcggag aagtgatcgg cgcggcgaga 4260
agcagcggac tcggagacga ggccttggat gagcagagtc tttacctgcc agggcgtgaa 4320
ggggaagagc ggccttctgg agtaggagtt cagcaagcgg cggttccttg gcggagtaag 4380
cggacgtaag ggtgngtgc gacgtcntcg tttcnggagg cgnattcatg aaggggtaaa 4440
gtcanatctg tagctctcga gtgctcaggg agccnaaaga cgttgggaaa ccgtcngcgt 4500
ttggggcatc agtngcggg gcacgcttcc ctctgctgc tccanaancn angtanattt 4560
aaaaganatg ggaattaan taatgnaat nannaggagg attgnaacgg tcnganccgn 4620
angaanagtt tttannggtt taaatactgg gggagtngna gccngccnct ggttccngtg 4680
tagangaaac caagnnccgg gagnttncn nnnngnaggg agaaaaagga nncatttnan 4740
nangcngagg gacatgaanc ggtacngagc tngngttcan nnancggcgn nnggnagtc 4800
cnngggaccn ggntggggtg anaagggaaan ggaacattng gtngnangga naanaccntt 4860
ttacnattgc ctttgacagn nngtntnggc ncntncgggt nacatnccgc tgcatgggct 4920
ttggggngcc nanaggnagc cncanggna nncngccncc ttgtncangn cgctnaagtt 4980
cnattgtana tggncgttg

```

<210> 9  
 <211> 96  
 <212> PRT  
 <213> Linum usitatissimum

```

<400> 9
Met Ala Arg Ser Ser Ser Pro Leu Leu Leu Ser Leu Cys Ile Phe Ala
 1             5             10             15
Ile Leu Phe His Ser Ser Leu Gly Arg Gln Gln Phe Gln Gln Gly Asn
                20             25             30
Glu Cys Gln Ile Asp Arg Ile Asp Ala Ser Glu Pro Asp Lys Thr Ile
          35             40             45
Gln Ala Glu Ala Gly Glu Val Trp Asp Gln Asn Arg Gln Gln Phe Gln
          50             55             60
Cys Ala Gly Val Ala Val Val Arg Arg Thr Ile Glu Pro Lys Gly Leu
          65             70             75             80
Leu Leu Pro Phe Tyr Ser Asn Thr Pro Gln Leu Ile Tyr Ile Val Gln
          85             90             95

```

<210> 10  
 <211> 85  
 <212> PRT  
 <213> Linum usitatissimum

8/11

<400> 10

Gly Arg Gly Val Thr Gly Ile Met Phe Pro Xaa Cys Pro Glu Thr Phe  
 1 5 10 15  
 Glu Glu Ser Gln Gln Gln Gly Gln Gln Gly Gln Gln Gly Ser Ser Gln  
 20 25 30  
 Asp Gln His Gln Lys Ile Arg Arg Phe Arg Glu Gly Asp Val Ile Ala  
 35 40 45  
 Val Pro Ala Gly Val Ala His Trp Ser Tyr Asn Asp Gly Asn Glu Pro  
 50 55 60  
 Val Met Ala Ile Val Val His Asp Thr Ser Ser His Leu Asn Gln Leu  
 65 70 75 80  
 Asp Asn Asn Pro Arg  
 85

<210> 11

<211> 165

<212> PRT

<213> Linum usitatissimum

<400> 11

Asn Phe Tyr Leu Ala Gly Asn Pro Arg Asp Glu Phe Glu Gln Ser Gln  
 1 5 10 15  
 Gln Gly Gly Arg Leu Ser Arg Gly Glu Ser Glu Gly Gly Arg Gly Arg  
 20 25 30  
 Arg Glu Pro Leu Gln Pro Ala Thr Thr Ser Ser Cys Gly Ile Asp Ser  
 35 40 45  
 Lys Leu Ile Ala Glu Ala Phe Asn Val Asp Glu Asn Val Ala Arg Arg  
 50 55 60  
 Leu Gln Ser Glu Asn Asp Asn Arg Gly Gln Ile Val Arg Val Glu Gly  
 65 70 75 80  
 Glu Leu Asp Ile Val Arg Pro Pro Thr Ser Ile Gln Glu Glu Ser Gln  
 85 90 95  
 Glu Gln Gly Gly Arg Gly Gly Gly Arg Tyr Tyr Ser Asn Gly Val Glu  
 100 105 110  
 Glu Thr Phe Cys Ser Met Arg Leu Ile Glu Asn Ile Gly Asp Pro Ser  
 115 120 125  
 Arg Ala Asp Ile Phe Thr Pro Glu Ala Gly Arg Val Arg Ser Leu Asn  
 130 135 140  
 Ser His Asn Leu Pro Val Leu Gln Trp Ile Gln Leu Ser Ala Glu Arg  
 145 150 155 160  
 Gly Val Leu Tyr Asn  
 165

<210> 12

<211> 141

<212> PRT

<213> Linum usitatissimum

9/11

<400> 12

Glu Ala Ile Arg Leu Pro His Trp Asn Ile Asn Ala His Ser Ile Val  
 1 5 10 15  
 Tyr Ala Ile Arg Gly Gln Ala Arg Val Gln Ile Val Asn Glu Glu Gly  
 20 25 30  
 Asn Ser Val Phe Asp Gly Val Leu Gln Glu Gly Gln Val Val Thr Val  
 35 40 45  
 Pro Gln Asn Phe Ala Val Val Lys Arg Ser Gln Ser Glu Arg Phe Glu  
 50 55 60  
 Trp Val Ala Phe Lys Thr Asn Asp Asn Ala Met Val Asn Ser Leu Ala  
 65 70 75 80  
 Gly Arg Thr Ser Ala Val Arg Ala Ile Pro Ala Asp Val Leu Ala Asn  
 85 90 95  
 Ala Trp Arg Val Ser Pro Glu Glu Ala Arg Arg Val Lys Phe Asn Arg  
 100 105 110  
 Gln Glu Thr His Leu Ala Ser Thr Arg Gly Gln Ser Arg Ser Pro Gly  
 115 120 125  
 Arg Leu Asn Val Val Lys Glu Val Ile Asn Leu Leu Met  
 130 135 140

<210> 13

<211> 11

<212> PRT

<213> Linum usitatissimum

<400> 13

Gln Gln Gln Gly Gln Gln Gln Gly Gln Gln Gln  
 1 5 10

<210> 14

<211> 18

<212> DNA

<213> Artificial Sequence

<220>

<223> Description of Artificial Sequence: Primer

<400> 14

tccactatgt aggtcata 18

<210> 15

<211> 18

<212> DNA

<213> Artificial Sequence

<220>

<223> Description of Artificial Sequence: Primer

<400> 15

ctttaagggtg tgagagtc 18

<210> 16

<211> 15

<212> DNA

<213> Artificial Sequence

10/11

<220>  
<223> Description of Artificial Sequence: Primer

<400> 16  
aggggtgatc gatta 15

<210> 17  
<211> 18  
<212> DNA  
<213> Artificial Sequence

<220>  
<223> Description of Artificial Sequence: Primer

<400> 17  
gatagaaccc acacgagc 18

<210> 18  
<211> 29  
<212> DNA  
<213> Artificial Sequence

<220>  
<223> Description of Artificial Sequence: Primer

<400> 18  
tatctagact caagcatacg gacaagggt 29

<210> 19  
<211> 6  
<212> DNA  
<213> Artificial Sequence

<220>  
<223> Description of Artificial Sequence: XbaI site

<400> 19  
tctaga 6

<210> 20  
<211> 21  
<212> DNA  
<213> Artificial Sequence

<220>  
<223> Description of Artificial Sequence: Primer

<400> 20  
ggttatcatt gtatgaactg a 21

<210> 21  
<211> 6  
<212> DNA  
<213> Artificial Sequence

<220>  
<223> Description of Artificial Sequence: NcoI site

<400> 21  
ccatgg 6

<210> 22  
<211> 32  
<212> DNA  
<213> Artificial Sequence



11/11

<220>  
<223> Description of Artificial Sequence: Primer

<400> 22  
gcaagcttaa tgtgacggtg aaataataac gg 32

<210> 23  
<211> 6  
<212> DNA  
<213> Artificial Sequence

<220>  
<223> Description of Artificial Sequence: HindIII Site

<400> 23  
aagctt 6

<210> 24  
<211> 29  
<212> DNA  
<213> Artificial Sequence

<220>  
<223> Description of Artificial Sequence: Primer

<400> 24  
taggtacctg gcaggtaaag actctgctc 29

<210> 25  
<211> 6  
<212> DNA  
<213> Artificial Sequence

<220>  
<223> Description of Artificial Sequence: KpnI Site

<400> 25  
ggtacc 6

# INTERNATIONAL SEARCH REPORT

International Application No

PCT/CA 00/00988

**A. CLASSIFICATION OF SUBJECT MATTER**  
 IPC 7 C12N15/82 A01H5/10 A01H5/00 C12N15/29

According to International Patent Classification (IPC) or to both national classification and IPC

**B. FIELDS SEARCHED**

Minimum documentation searched (classification system followed by classification symbols)

IPC 7 C12N

Documentation searched other than minimum documentation to the extent that such documents are included in the fields searched

Electronic data base consulted during the international search (name of data base and, where practical, search terms used)

WPI Data, EPO-Internal, BIOSIS, MEDLINE

**C. DOCUMENTS CONSIDERED TO BE RELEVANT**

Category °	Citation of document, with indication, where appropriate, of the relevant passages	Relevant to claim No.
X	WO 98 18948 A (JAIN RAVINDER KUMAR ;THOMPSON ROBERTA GAIL (CA); CANADA NAT RES CO) 7 May 1998 (1998-05-07) cited in the application the whole document	1-3,6-9, 12,13
X	--- SAMMOUR REDA HELMY: "Proteins of linseed (Linum usitatissimum L.), extraction and characterization by electrophoresis." BOTANICAL BULLETIN OF ACADEMIA SINICA (TAIPEI), vol. 40, no. 2, April 1999 (1999-04), pages 121-126, XP000945031 ISSN: 0006-8063 the whole document --- -/--	1-3,6-9, 12,13

Further documents are listed in the continuation of box C.

Patent family members are listed in annex.

° Special categories of cited documents :

- \*A\* document defining the general state of the art which is not considered to be of particular relevance
- \*E\* earlier document but published on or after the international filing date
- \*L\* document which may throw doubts on priority claim(s) or which is cited to establish the publication date of another citation or other special reason (as specified)
- \*O\* document referring to an oral disclosure, use, exhibition or other means
- \*P\* document published prior to the international filing date but later than the priority date claimed

- \*T\* later document published after the international filing date or priority date and not in conflict with the application but cited to understand the principle or theory underlying the invention
- \*X\* document of particular relevance; the claimed invention cannot be considered novel or cannot be considered to involve an inventive step when the document is taken alone
- \*Y\* document of particular relevance; the claimed invention cannot be considered to involve an inventive step when the document is combined with one or more other such documents, such combination being obvious to a person skilled in the art.
- \*Z\* document member of the same patent family

Date of the actual completion of the international search

15 December 2000

Date of mailing of the international search report

05/01/2001

Name and mailing address of the ISA

European Patent Office, P.B. 5818 Patentlaan 2  
 NL - 2280 HV Rijswijk  
 Tel. (+31-70) 340-2040, Tx. 31 651 epo nl,  
 Fax: (+31-70) 340-3016

Authorized officer

Bilang, J

# INTERNATIONAL SEARCH REPORT

International Application No

PCT/CA 00/00988

**C.(Continuation) DOCUMENTS CONSIDERED TO BE RELEVANT**

Category °	Citation of document, with indication, where appropriate, of the relevant passages	Relevant to claim No.
X	<p>BORGMEYER J R ET AL: "ISOLATION AND CHARACTERIZATION OF A 25 KDA ANTIFUNGAL PROTEIN FROM FLAX SEEDS"                      BIOCHEMICAL AND BIOPHYSICAL RESEARCH COMMUNICATIONS,                      vol. 187, no. 1, 1992, pages 480-487,                      XP000941778                      ISSN: 0006-291X                      the whole document                      -----</p>	<p>1-3,6-9, 12,13</p>

# INTERNATIONAL SEARCH REPORT

Information on patent family members

International Application No

PCT/CA 00/00988

Patent document cited in search report	Publication date	Patent family member(s)	Publication date
WO 9818948 A	07-05-1998	AU 4858897 A	22-05-1998
		GB 2332908 A	07-07-1999

---